



# Shelter Reservation Packet for Kent Park

March 29, 2024

The purpose of this packet is to make it as easy as possible to rent a shelter at Kent Park. For all reservations please use [mycountyparks.com](http://mycountyparks.com) - search F.W. Kent Park. Shelter information and payment can be made through this site.

## Contact Information

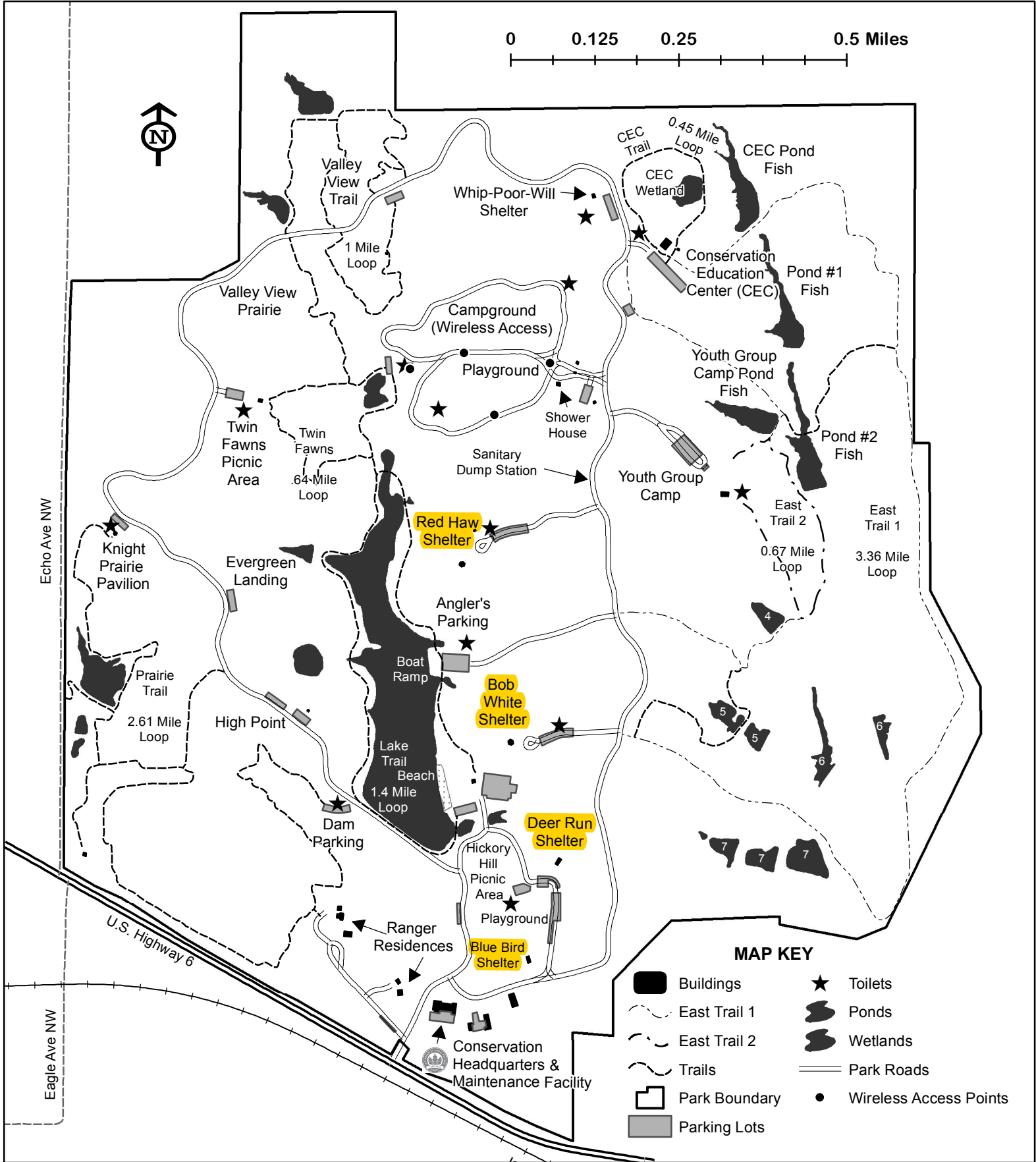
Johnson County Conservation

2048 Hwy 6 NW

Oxford, IA 52322

telephone #: 319-645-2315

<https://www.johnsoncountyiowa.gov/departments-of-conservation>



# RESERVABLE SHELTERS

## F.W. Kent Park

## **SHELTER RESERVATION USE**

While it is *not* illegal to have or consume beer in Kent Park, in order for you and other park visitors around you to have an enjoyable outdoor experience, we ask you to pay particular attention to the following information:

It is unlawful for any person to use or consume alcoholic liquors or beer upon the public streets or highways. Kent Park roads are public streets.

Any member of the group engaging in loud, offensive, disturbing behavior tending to disturb the peace and quiet of the park may be charged with disorderly conduct.

Kent Park is a "carry-in, carry-out" public area so all trash and waste material must be removed when vacating the park.

## **NOTICE - POSTING OF SIGNS**

The posting of temporary directional signs by groups using the shelters or the youth group camp is not allowed.

Park Rangers will remove these signs.

Please have members of your group aware of the event's location so that they may follow the directional signs at the park.

# NOTICE – TORNADO EVENT

F. W. Kent Park is now equipped with a new, state of the art, solar powered **Tornado Alert Siren**. It is located in the Visitor's Parking Lot near the campground. The **siren will not activate** in the case of a **TORNADO WATCH**. A watch simply means that weather conditions are such that a tornado is a possibility.

1. Watch for funnel clouds
2. Keep an eye on the sky
3. Listen for sirens
4. If available tune in your local radio station AM 600 or AM 800 in this location. If television is available turn to Channel 2 or 9.

## **WHAT TO DO WHEN THE SIREN SOUNDS:**

This **SIREN WILL ACTIVATE** only in the event of a **TORNADO WARNING**. This activation will come through the Joint Emergency Communications Center dispatchers. \*

**If the tornado siren sounds, *do not panic*** - there will be a solid blast lasting 3 minutes.

### **DO:**

### **SEEK SHELTER IMMEDIATELY!**

If you are trapped outside and there is no basement or building to get into, your best chance for survival is to **GET AWAY FROM THE FATAL WINDS**.

**SEEK SHELTER** in a ditch, gully, ravine or the Tornado Shelter in the campground. Even just a low spot in the ground will provide you some protection. **LIE FACE DOWN** and **COVER YOUR HEAD**.

### **DO NOT:**

*Do not* stand and watch the tornado.

*Do not* get into a grove of trees.

*Do not* get into automobiles or campers.

**Park Rangers are trained weather spotters who know how to react and provide immediate assistance.**

\* Activation will take place within seconds after the county receives either a NWS Warning or when an actual tornado or funnel cloud is reported in Johnson County by Public Safety Personnel or Trained Civilian Weather Spotters.

New upgrades allow outdoor sirens to be activated in a pattern of zones, or as a countywide alert as has occurred in the past, depending on the warning issued by the National Weather Service (NWS). This new zone system means that a warning issued by the NWS, which only affects far northern or far southern Johnson County will allow dispatchers to set off sirens in the affected areas rather than for the entire county.