

# Poor Farm Healing Trail

## 4811 MELROSE AVENUE, IOWA CITY, IOWA 52246

OWNER

JOHNSON COUNTY  
913 DUBUQUE STREET  
IOWA CITY, IOWA 52240  
ILSA DEWALD  
idewald@johnsoncountyiowa.gov  
319-243-3426

ARCHITECT:

MARTIN GARDNER ARCHITECTURE, P.C.  
700 11TH STREET  
SUITE 200  
MARION, IOWA 52302  
KYLE MARTIN  
kylem@martingardnerarch.com  
319-200-8493

CIVIL

SHOEMAKER & HAALAND  
329 10TH AVE SE  
SUITE 215  
CEDAR RAPIDS, IOWA 52401  
JAY VAVRA  
jvarva@shoemaker-haaland.com  
319-313-7910

GRADING NOTES:

1. PRIOR TO ANY SITE EXCAVATION, THE CONTRACTOR SHALL EXAMINE ANY APPLICABLE DRAWINGS AVAILABLE FROM THE OWNER/ OR ARCHITECT, AND CONSULT WITH OWNER'S REPRESENTATIVES TO DETERMINE POSSIBLE UTILITIES LOCATIONS AND DEPTHS. NO COMPENSATION WILL BE ALLOWED FOR DAMAGE RESULTING FROM FAILURE TO COMPLY WITH THIS REQUIREMENT.  
CONTACT IOWA ONE CALL AT: 1-800-292-8989
2. INSTALL SILT FENCE AT PERMANENT STORM SEWER INLETS AND SEED ALL SLOPES FOR EROSION CONTROL. SILT FENCE SHALL BE MAINTAINED UNTIL ESTABLISHMENT OF PERMANENT GROUND COVER OR EROSION CONTROL MEASURE.
3. SEE SPECS FOR MINIMUM DEPTH OF TOP SOIL FOR ALL LAWN AREAS AND PLANTING BEDS. ALL DEBRIS SPILLED ON THE R.O.W. SHALL BE PICKED UP BY THE CONTRACTOR AT THE END OF EACH WORK DAY.
4. CONTRACTOR TO FIELD ADJUST ALL EXISTING SITE UTILITIES TO NEW FINISHED GRADES. EXISTING UTILITIES INCLUDE, BUT ARE NOT LIMITED TO, FIRE HYDRANTS, MANHOLE RIMS, INLETS, WATER VALVES, AND LIGHT BASES.
5. THE CONTRACTOR SHALL BE RESPONSIBLE FOR POSITIVE SURFACE DRAINAGE IN ALL AREAS, UNLESS OTHERWISE NOTED. ALL NEWLY GRADED AND SURFACES SHALL BE FINISHED TO UNIFORM GRADES AND SLOPED IN SUCH A MANNER TO BE FREE OF DEPRESSIONS THAT CAUSE AREAS OF STANDING WATER. THE CONTRACTOR SHALL REPORT ANY CONFLICTS WITH THIS REQUIREMENT TO THE ARCHITECT FOR RESOLUTION PRIOR TO THE FINAL GRADING OPERATIONS.
7. WHERE PROPOSED GRADES MEET EXISTING, BLEND GRADES TO PROVIDE A SMOOTH TRANSITION BETWEEN THE NEW WORK AND EXISTING WORK. PONDING AT JOINTS WILL NOT BE ACCEPTED.
8. CONTRACTOR RESPONSIBLE FOR ALL PRIVATE LOCATES NOT COVERED BY THE IOWA ONE CALL SYSTEM



GENERAL NOTES:

1. ALL WORK ON THIS PROJECT IS TO BE BUILT IN ACCORDANCE TO ALL FEDERAL, STATE, AND LOCAL BUILDING CODES. CONTRACTOR SHALL BRING TO ARCHITECT'S ATTENTION ALL ITEMS REQUIRING INTERPRETATION.
2. ALL CONTRACTORS ON THIS PROJECT MUST BE REGISTERED WITH THE STATE OF IOWA. GENERAL CONTRACTOR SHALL OBTAIN A COPY OF THE STATE REGISTRATION AND INSURANCE CERTIFICATES FROM EACH CONTRACTOR AND TRANSMIT TO ARCHITECT PRIOR TO START OF CONSTRUCTION.
3. HAZARDOUS MATERIAL: THE OWNER AT THIS TIME HAS NO KNOWLEDGE OF ASBESTOS OR ANY OTHER HAZARDOUS MATERIAL WITHIN OR ADJACENT TO THE EXISTING BUILDING. SHOULD THE CONTRACTOR OR ANY OF HIS SUBCONTRACTORS ENCOUNTER MATERIAL WHICH THEY SUSPECT TO CONTAIN OR BE CONTAMINATED WITH ASBESTOS OR OTHER HAZARDOUS MATERIAL IN HAZARDOUS FORM, THEY SHOULD IMMEDIATELY:  
A. CEASE ALL OPERATIONS IN THE AREA OF SUSPECTED MATERIAL.  
B. NOTIFY THE OWNER VERBALLY AND CONFIRM THE NOTIFICATION IN WRITING. ONCE NOTIFIED, THE OWNER WILL BE RESPONSIBLE TO HAVE THE QUESTIONABLE MATERIAL TESTED AND IF NECESSARY, REMOVED OR STABILIZED.

INSTRUCTIONS TO CODE OFFICIALS

UPON COMPLETION OF THE REVIEW OF THESE CONSTRUCTION DOCUMENTS, PLEASE COPY ALL MARKUPS AND/OR COMMENTS TO THE APPLICANT AND THE ARCHITECT.

DRAWING SHEET INDEX

- 3 - ARCHITECTURAL
- |      |                            |
|------|----------------------------|
| A100 | ARCHITECTURAL SITE PLAN    |
| A101 | REFLECTION PATH SITE PLAN  |
| A102 | REFLECTION PATH DETAILS    |
| A103 | AMPHITHEATER SITE PLAN     |
| A104 | AMPHITHEATER PLANTING PLAN |
| A105 | DETAILS                    |
| A106 | ASYLUM SITE PLAN           |

I hereby certify that the portion of this technical submission described below was prepared by me or under my direct supervision and responsible charge. I am a duly licensed architect under the laws of the state of Iowa

Kyle David Martin Date:  
License number: 06709  
License expires: Date issued:  
Pages or sheets covered by this seal:

PRELIMINARY - NOT FOR CONSTRUCTION

ISSUE DATE:	Issue Date
REVISION	REVISION
NUMBER:	NUMBER:
DATE:	DATE:

JOHNSON COUNTY

Poor Farm Healing Trail

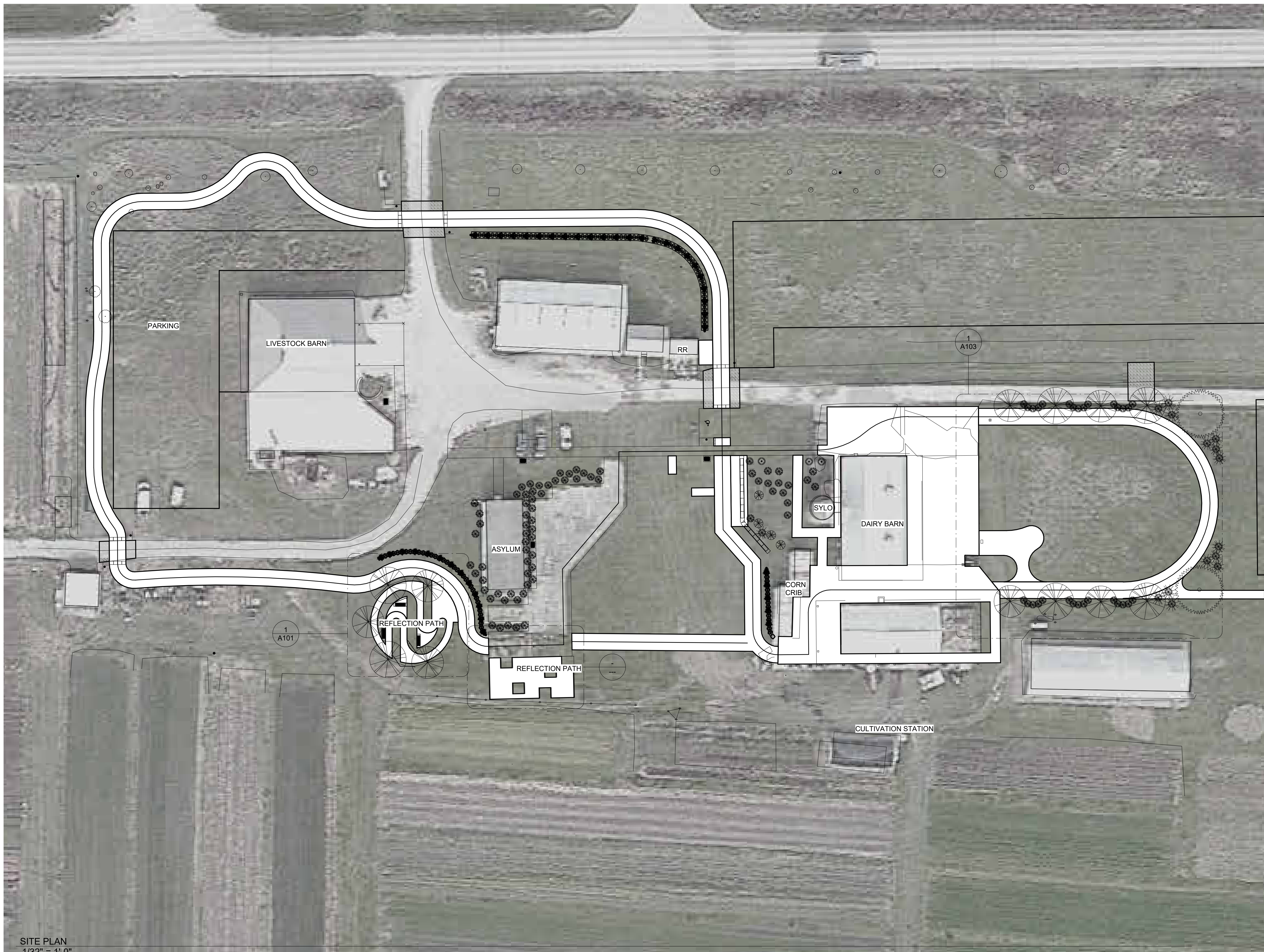
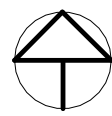


700 11TH ST  
SUITE 200  
MARION, IOWA  
52302  
102 S. FREDERICK  
AVE  
SUITE #1  
OELWEIN, IOWA  
50662  
WWW.MARTINGARDNERARCH.COM  
(319) 377-7604

CV

2200024





SITE PLAN  
1/32" = 1'-0"

ARCHITECTURAL SITE PLAN NOTES:

1. SEE CIVIL DRAWINGS FOR GRADING, UTILITIES, LANDSCAPING, AND OTHER SITE REQUIREMENTS.
2. GRADE ALL AREAS TO DRAIN WITHOUT PONDING.
3. SEE MECHANICAL/ELECTRICAL DRAWINGS FOR BUILDING UTILITIES CONNECTIONS AND SITE LIGHTING.
4. FINISH GRADE IS TO BE NOT LESS THAN 6" BELOW SIDING.
5. IF ANY UTILITIES OR STRUCTURES ARE DISCOVERED DURING EXCAVATION AND SITE GRADING NOT INDICATED ON THE DRAWINGS, CONTACT THE ARCHITECT IMMEDIATELY.
6. REMOVE MISC. SLABS, PIPES, ROCKS & OTHER FEATURES NO LONGER BEING USED. SEE SITE PLANS FOR FURTHER INFORMATION.
7. COORDINATE SHUT OFF UTILITIES AND STREET CLOSURES WITH ARCHITECT AND OWNER.
8. PROVIDE HANDICAPPED PARKING SIGNS ON POSTS AT EACH HANDICAPPED PARKING SPACE.
9. SEAL EXPANSION JOINTS IN SIDEWALKS WITH BACKER ROD AND PAVING JOINT SEALANT.
10. PROVIDE EROSION CONTROL FOR SITE WITH SILT FENCES, SETTLING BEDS, AND OTHER METHODS TO PREVENT EROSION INTO WATERWAY OR STREET. CONTRACTOR TO PAY FOR ALL EROSION CLEANUP REQUIRED. CONNECT ALL DOWNSPOUTS FROM BUILDING TO DRAIN TILE. SEE CIVIL FOR DAYLIGHT LOCATION.

PRELIMINARY - NOT FOR CONSTRUCTION



700 11TH ST  
SUITE 200  
MARION, IOWA  
52302  
102 S. FREDERICK  
AVE  
SUITE #1  
OELWEIN, IOWA  
50662  
WWW.MARTINGARDNERARCH.COM  
(319) 377-7604

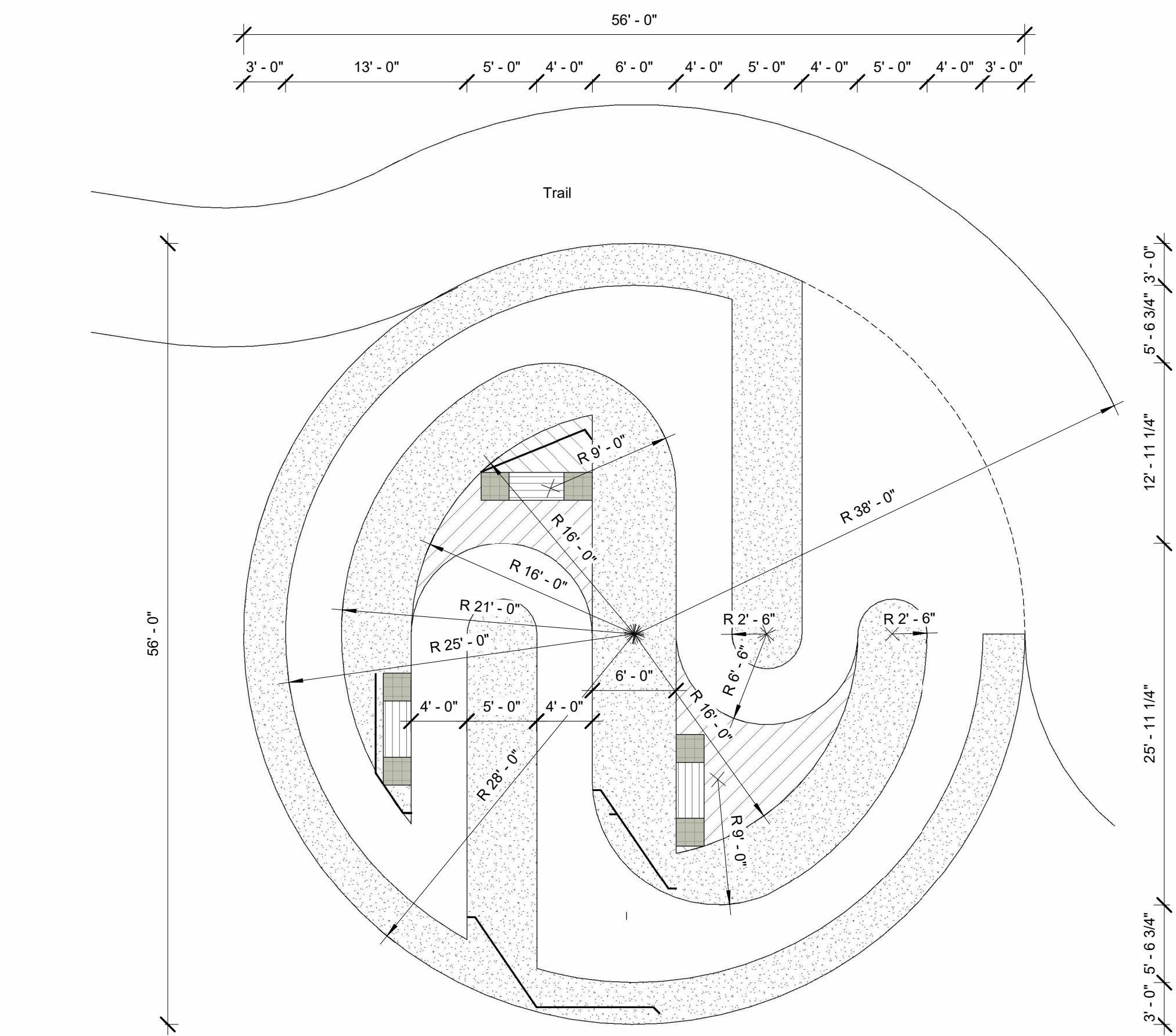
JOHNSON COUNTY  
Poor Farm Healing Trail

ISSUE DATE:	Issue Date
REVISION	REVISION
NUMBER:	DATE:

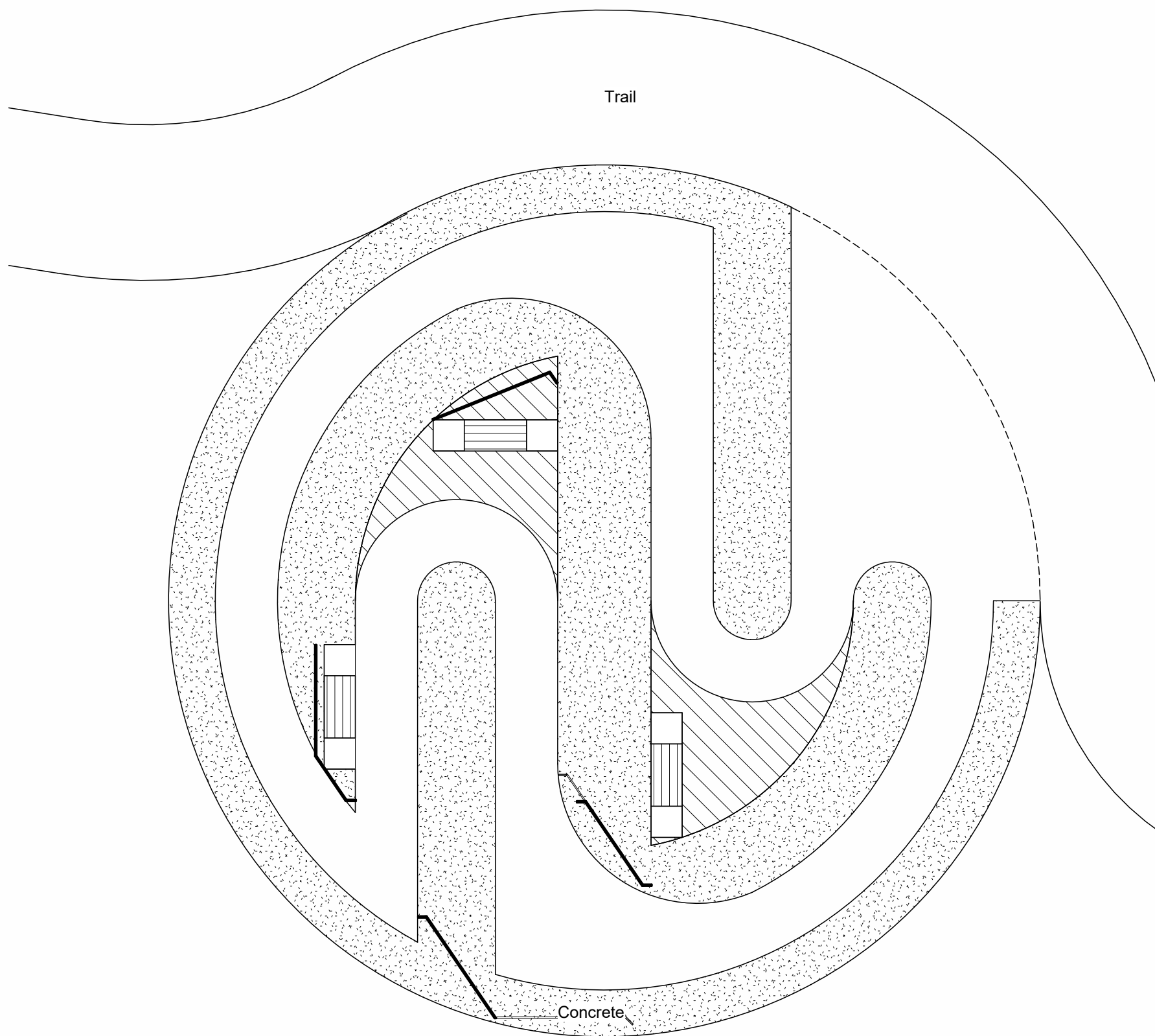
A100

2200024

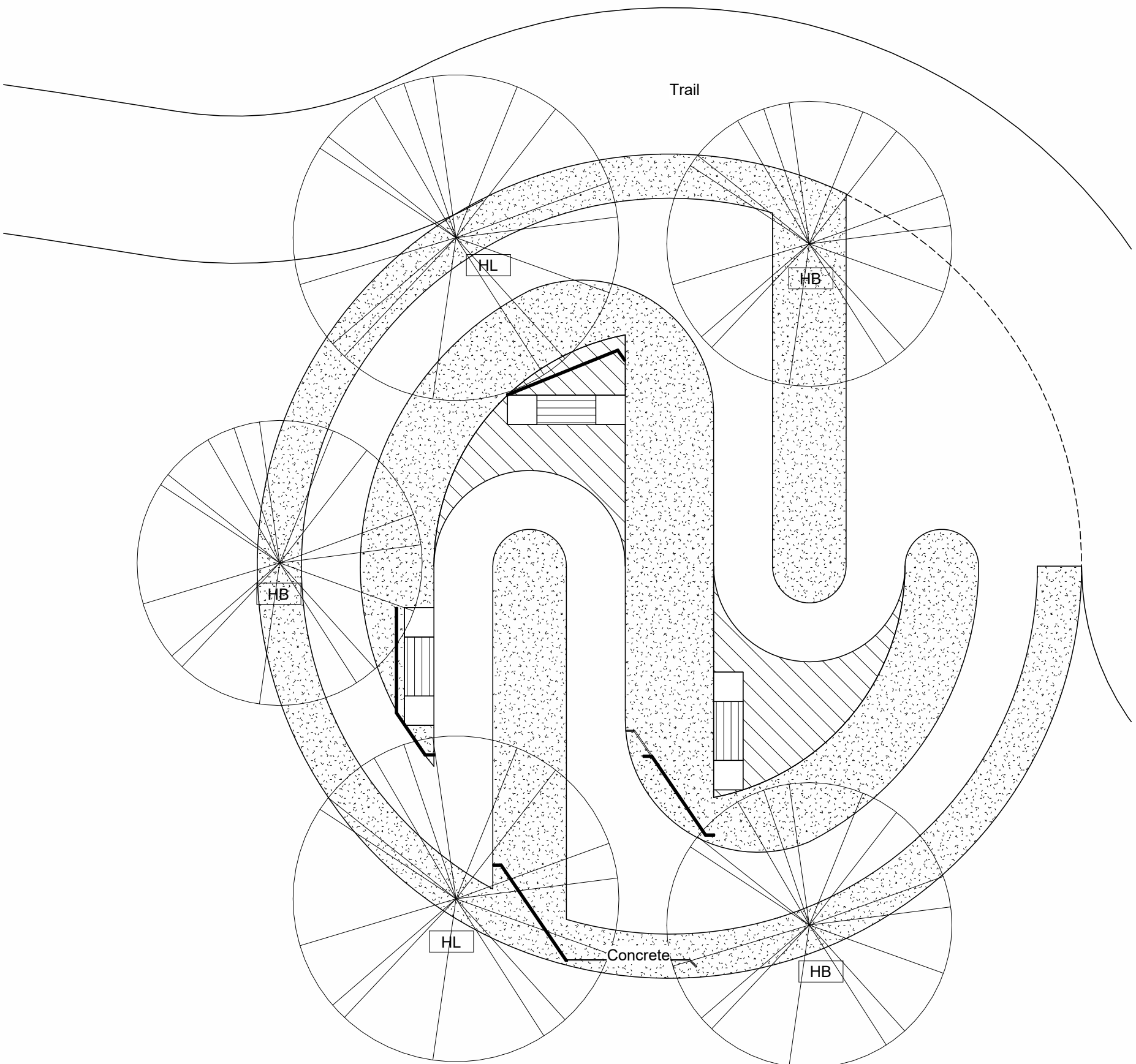




1 REFLECTION PATH SITE PLAN  
A101 1/8" = 1'-0"



2 PAVING / PLANTER PLAN  
A101 1/8" = 1'-0"



3 PLANTING PLAN  
A101 1/8" = 1'-0"

PLANTING SCHEDULE					
Type Mark	NAME	BOTANICAL NAME	FORM	QTY.	COMMENTS
HB	American Hornbeam - 35'	CARPINUS CAROLINIANA	TREE	3	
HL	Honey Locust - 40'	GLEDITSIA TRIACANTHOS 'SUNBURST'	TREE	2	

ARCHITECTURAL SITE PLAN NOTES:

- SEE CIVIL DRAWINGS FOR GRADING, UTILITIES, LANDSCAPING, AND OTHER SITE REQUIREMENTS.
- GRADE ALL AREAS TO DRAIN WITHOUT PONDING.
- SEE MECHANICAL/ELECTRICAL DRAWINGS FOR BUILDING UTILITIES CONNECTIONS AND SITE LIGHTING.
- FINISH GRADE IS TO BE NOT LESS THAN 6" BELOW SIDING.
- IF ANY UTILITIES OR STRUCTURES ARE DISCOVERED DURING EXCAVATION AND SITE GRADING NOT INDICATED ON THE DRAWINGS, CONTACT THE ARCHITECT IMMEDIATELY.
- REMOVE MISC. SLABS, PIPES, ROCKS & OTHER FEATURES NO LONGER BEING USED. SEE SITE PLANS FOR FURTHER INFORMATION.
- COORDINATE SHUT OFF UTILITIES AND STREET CLOSURES WITH ARCHITECT AND OWNER.
- PROVIDE HANDICAPPED PARKING SIGNS ON POSTS AT EACH HANDICAPPED PARKING SPACE.
- SEAL EXPANSION JOINTS IN SIDEWALKS WITH BACKER ROD AND PAVING JOINT SEALANT.
- PROVIDE EROSION CONTROL FOR SITE WITH SILT FENCES, SETTLING BEDS, AND OTHER METHODS TO PREVENT EROSION INTO WATERWAY OR STREET. CONTRACTOR TO PAY FOR ALL EROSION CLEANUP REQUIRED. CONNECT ALL DOWNSPOUTS FROM BUILDING TO DRAIN TILE. SEE CIVIL FOR DAYLIGHT LOCATION.

PRELIMINARY - NOT FOR CONSTRUCTION

ISSUE DATE:	Issue Date
REVISION	REVISION
NUMBER:	NUMBER:
DATE:	DATE:

JOHNSON COUNTY  
Poor Farm Healing Trail

**MGA**  
MARTIN GARDNER  
ARCHITECTURE  
© 2023

700 11TH ST  
SUITE 200  
MARION, IOWA  
52302  
102 S. FREDERICK  
AVE  
SUITE #1  
OELWEIN, IOWA  
50662  
WWW.MARTINGARDNERARCH.COM  
(319) 377-7604

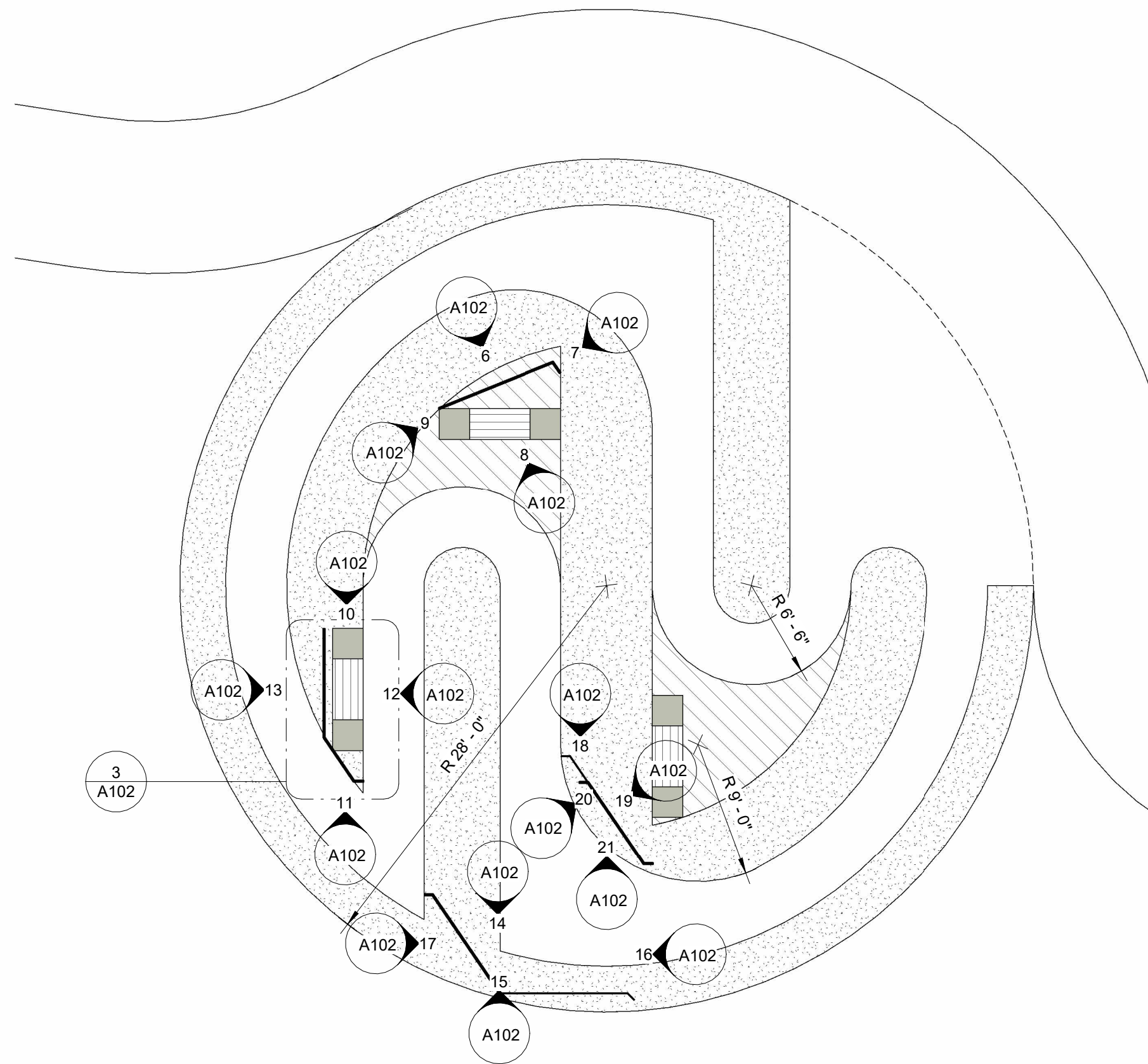
A101

2200024

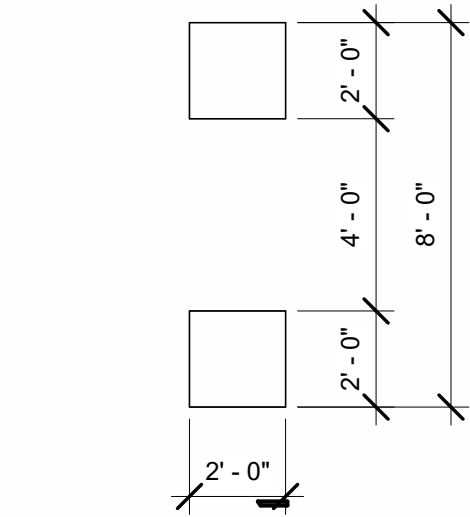
REFLECTION PATH SITE PLAN



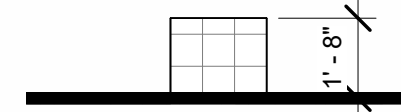
2/27/2023, 4:15:28 PM  
AutoCAD Docx/Johanson County Poor Farm Healing Trail Form.rvt  
REVISED 2023



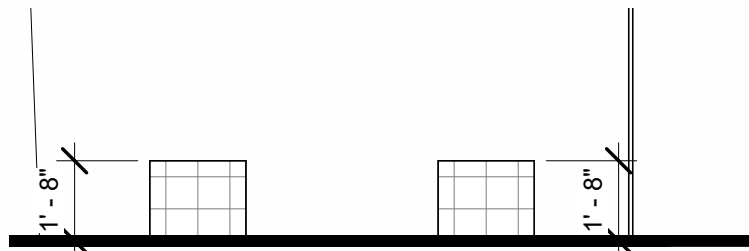
1 MAIN FLOOR PLAN  
A102 1/8" = 1'-0"



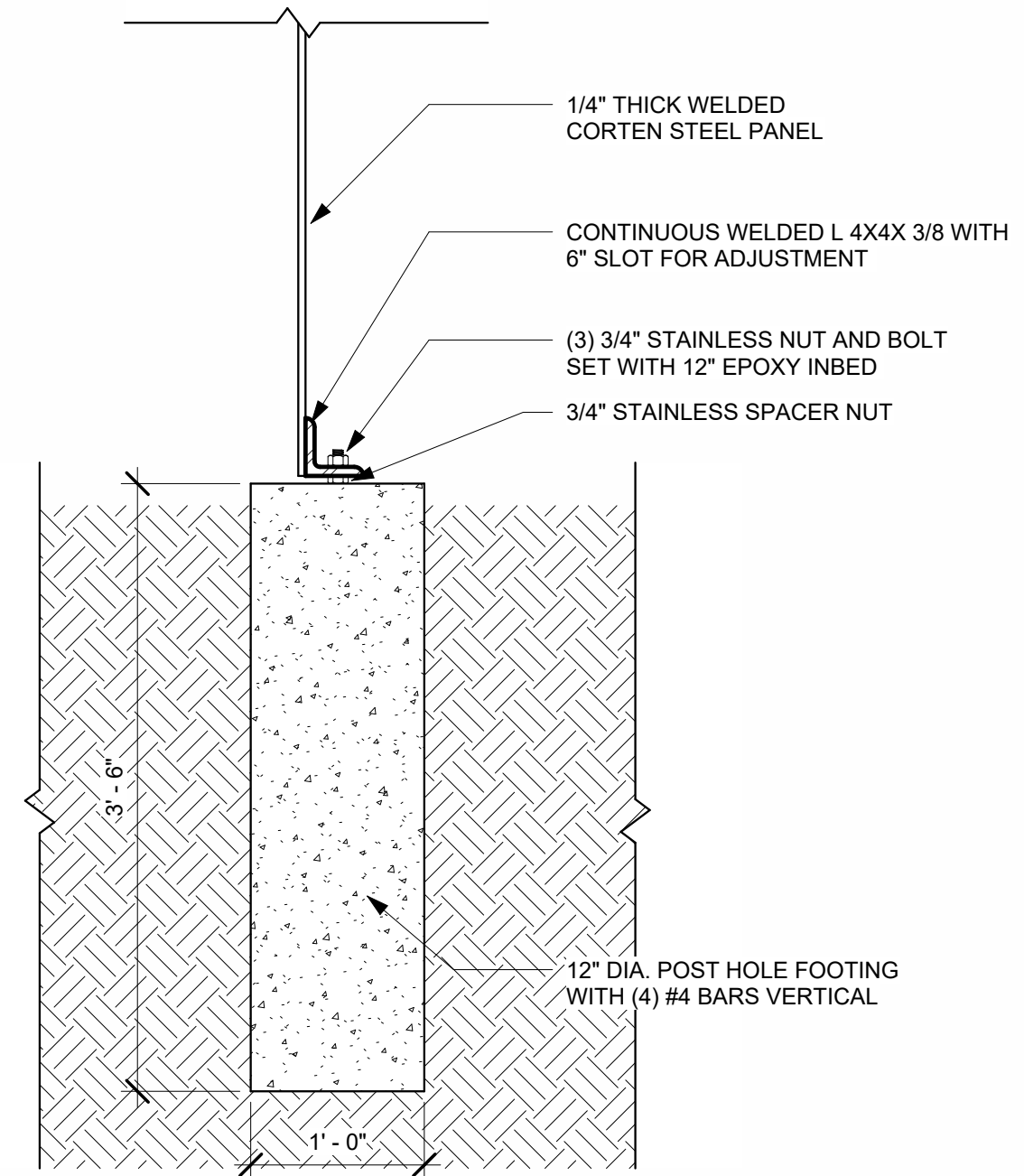
3 BENCH  
A102 1/4" = 1'-0"



4 FRONT ELEVATION  
A102 1/4" = 1'-0"



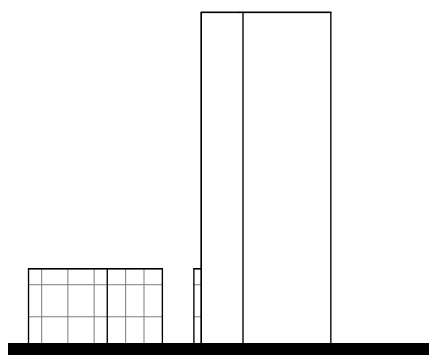
5 SIDE ELEVATION  
A102 1/4" = 1'-0"



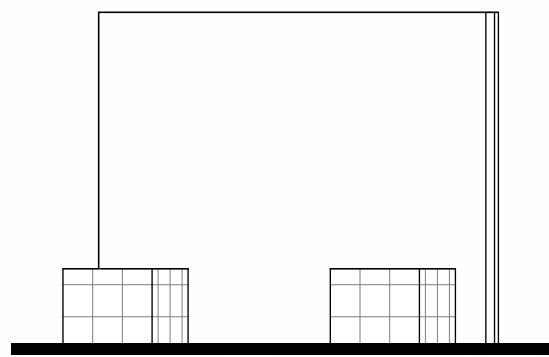
22 TYP DETAIL METAL SCULPTURE  
A102 1" = 1'-0"



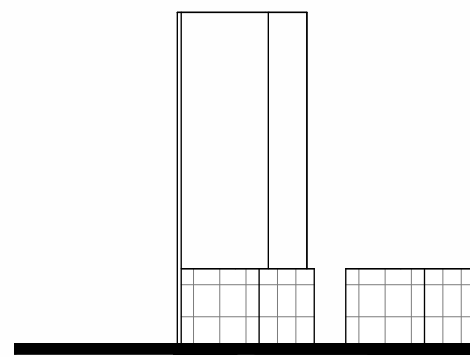
6 Elevation 1 METAL SCULPTURE  
A A102 1/4" = 1'-0"



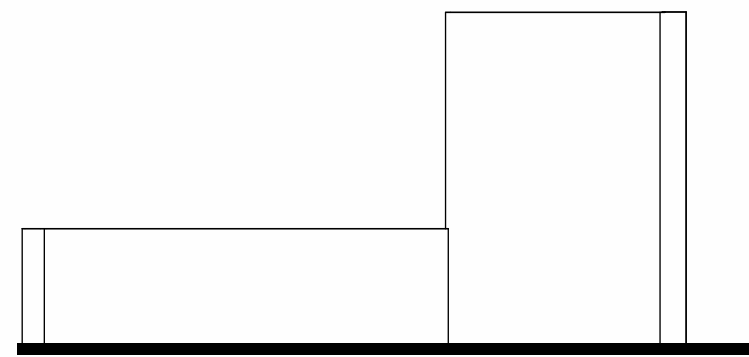
7 Elevation 2 METAL SCULPTURE  
A A102 1/4" = 1'-0"



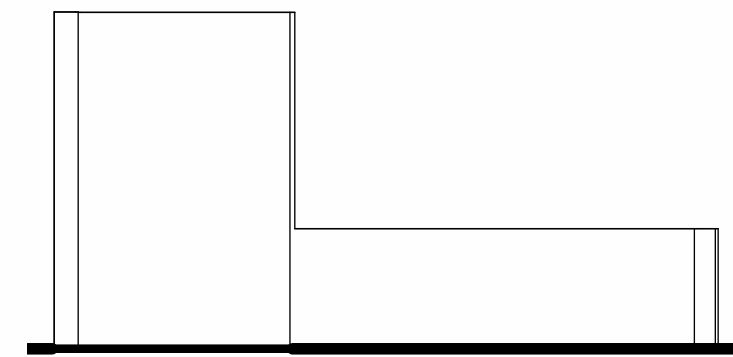
8 Elevation 3 METAL SCULPTURE  
A A102 1/4" = 1'-0"



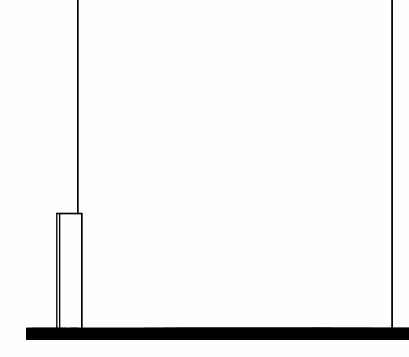
9 Elevation 4 METAL SCULPTURE  
A A102 1/4" = 1'-0"



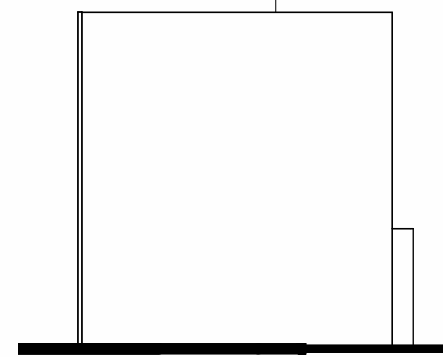
14 Elevation 1 METAL SCULPTURE  
C A102 1/4" = 1'-0"



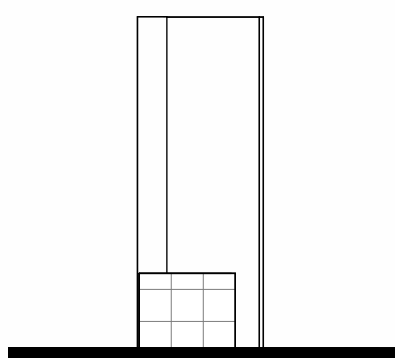
15 Elevation 2 METAL SCULPTURE  
C A102 1/4" = 1'-0"



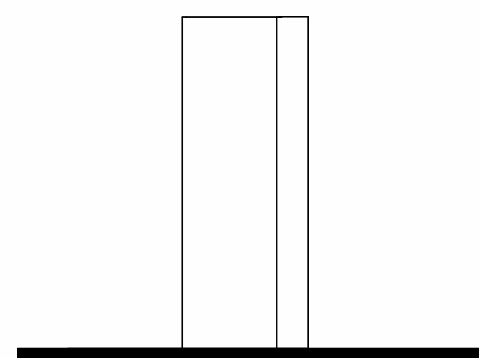
16 Elevation 3 METAL SCULPTURE  
C A102 1/4" = 1'-0"



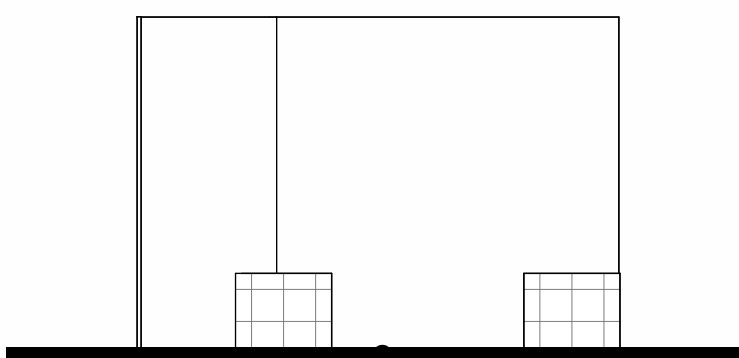
17 Elevation 4 METAL SCULPTURE  
C A102 1/4" = 1'-0"



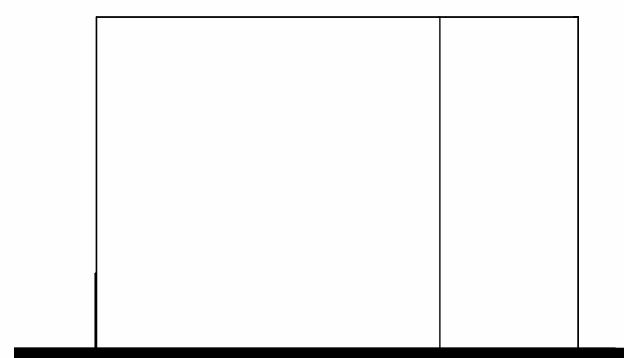
10 Elevation 1 METAL SCULPTURE  
B A102 1/4" = 1'-0"



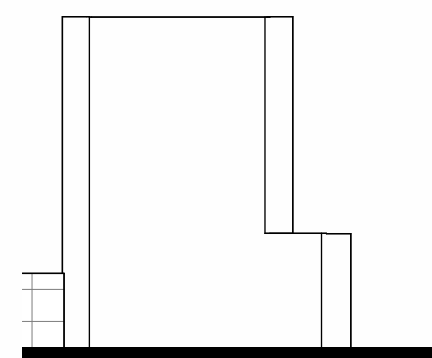
11 Elevation 2 METAL SCULPTURE  
B A102 1/4" = 1'-0"



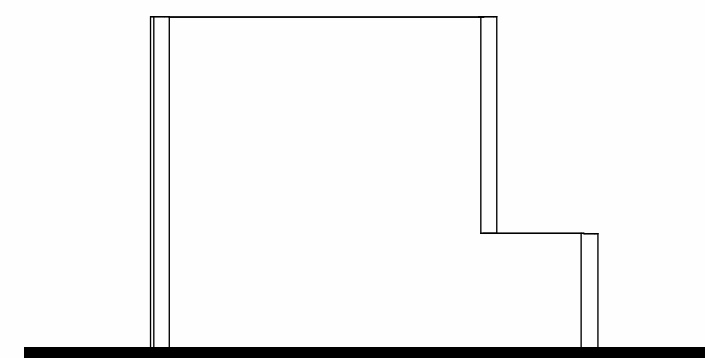
12 Elevation 3 METAL SCULPTURE  
B A102 1/4" = 1'-0"



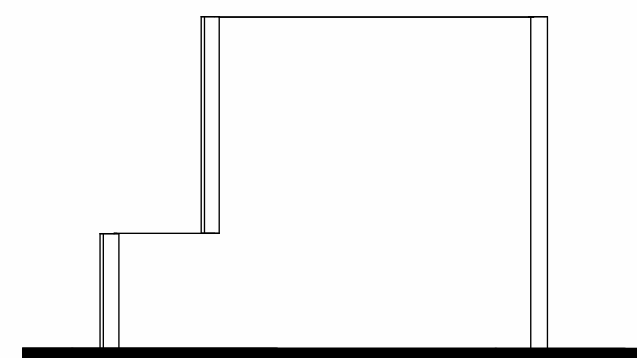
13 Elevation 4 METAL SCULPTURE  
B A102 1/4" = 1'-0"



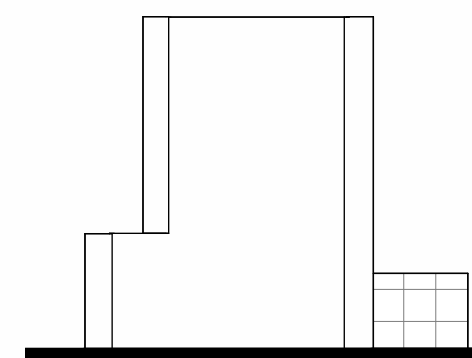
18 Elevation 1 METAL SCULPTURE  
D A102 1/4" = 1'-0"



19 Elevation 2 METAL SCULPTURE  
D A102 1/4" = 1'-0"



20 Elevation 3 METAL SCULPTURE  
D A102 1/4" = 1'-0"



21 Elevation 4 METAL SCULPTURE  
D A102 1/4" = 1'-0"

REFLECTION PATH DETAILS

PRELIMINARY - NOT FOR CONSTRUCTION



MARTIN GARDNER  
ARCHITECTURE  
© 2023

700 11TH ST  
SUITE 200  
MARION, IOWA  
52302  
102 S. FREDERICK  
AVE  
SUITE #1  
OELWEIN, IOWA  
50662  
WWW.MARTINGARDNERARCH.COM  
(319) 377-7604

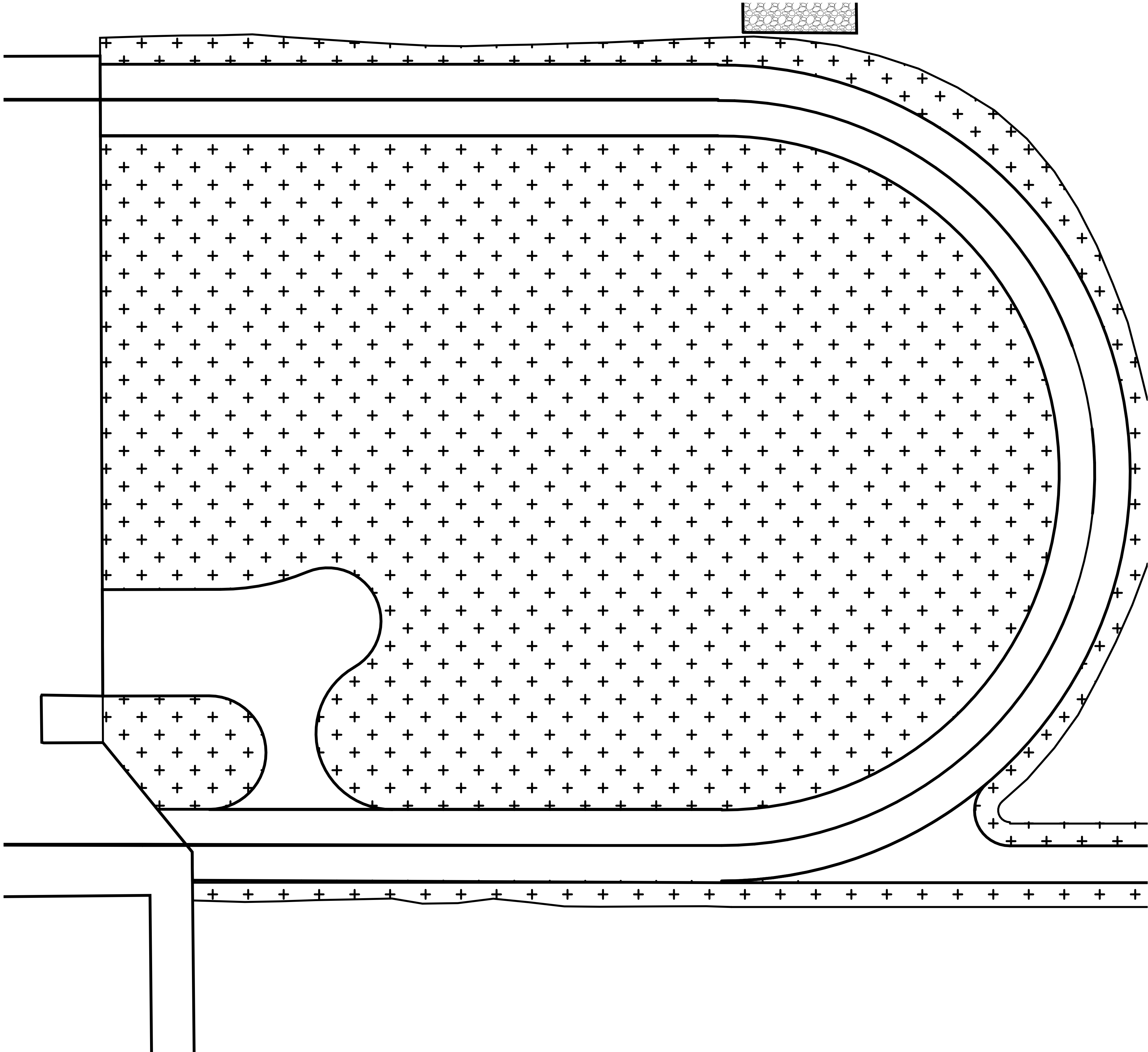
JOHNSON COUNTY  
Poor Farm Healing Trail

A102

2200024

2/27/2023, 4:15:27 PM  
AutoCAD Docx://Johnson County Poor Farm/Poor Farm.rvt  
RVT: YSR/GCH/2023

1  
A103  
AMPHITHEATER SITE PLAN  
1/8" = 1'-0"



ARCHITECTURAL SITE PLAN NOTES:

- SEE CIVIL DRAWINGS FOR GRADING, UTILITIES, LANDSCAPING, AND OTHER SITE REQUIREMENTS.
- GRADE ALL AREAS TO DRAIN WITHOUT PONDING.
- SEE MECHANICAL/ELECTRICAL DRAWINGS FOR BUILDING UTILITIES CONNECTIONS AND SITE LIGHTING.
- FINISH GRADE IS TO BE NOT LESS THAN 6" BELOW SIDING.
- IF ANY UTILITIES OR STRUCTURES ARE DISCOVERED DURING EXCAVATION AND SITE GRADING NOT INDICATED ON THE DRAWINGS, CONTACT THE ARCHITECT IMMEDIATELY.
- REMOVE MISC. SLABS, PIPES, ROCKS & OTHER FEATURES NO LONGER BEING USED. SEE SITE PLANS FOR FURTHER INFORMATION.
- COORDINATE SHUT OFF UTILITIES AND STREET CLOSURES WITH ARCHITECT AND OWNER.
- PROVIDE HANDICAPPED PARKING SIGNS ON POSTS AT EACH HANDICAPPED PARKING SPACE.
- SEAL EXPANSION JOINTS IN SIDEWALKS WITH BACKER ROD AND PAVING JOINT SEALANT.
- PROVIDE EROSION CONTROL FOR SITE WITH SILT FENCES, SETTLING BEDS, AND OTHER METHODS TO PREVENT EROSION INTO WATERWAY OR STREET. CONTRACTOR TO PAY FOR ALL EROSION CLEANUP REQUIRED. CONNECT ALL DOWNSPOUTS FROM BUILDING TO DRAIN TILE. SEE CIVIL FOR DAYLIGHT LOCATION.

AMPHITHEATER SITE PLAN

PRELIMINARY - NOT FOR CONSTRUCTION

ISSUE DATE:	Issue Date
REVISION	REVISION
NUMBER:	DATE:

JOHNSON COUNTY  
Poor Farm Healing Trail

MGA

MARTIN GARDNER  
ARCHITECTURE  
© 2023

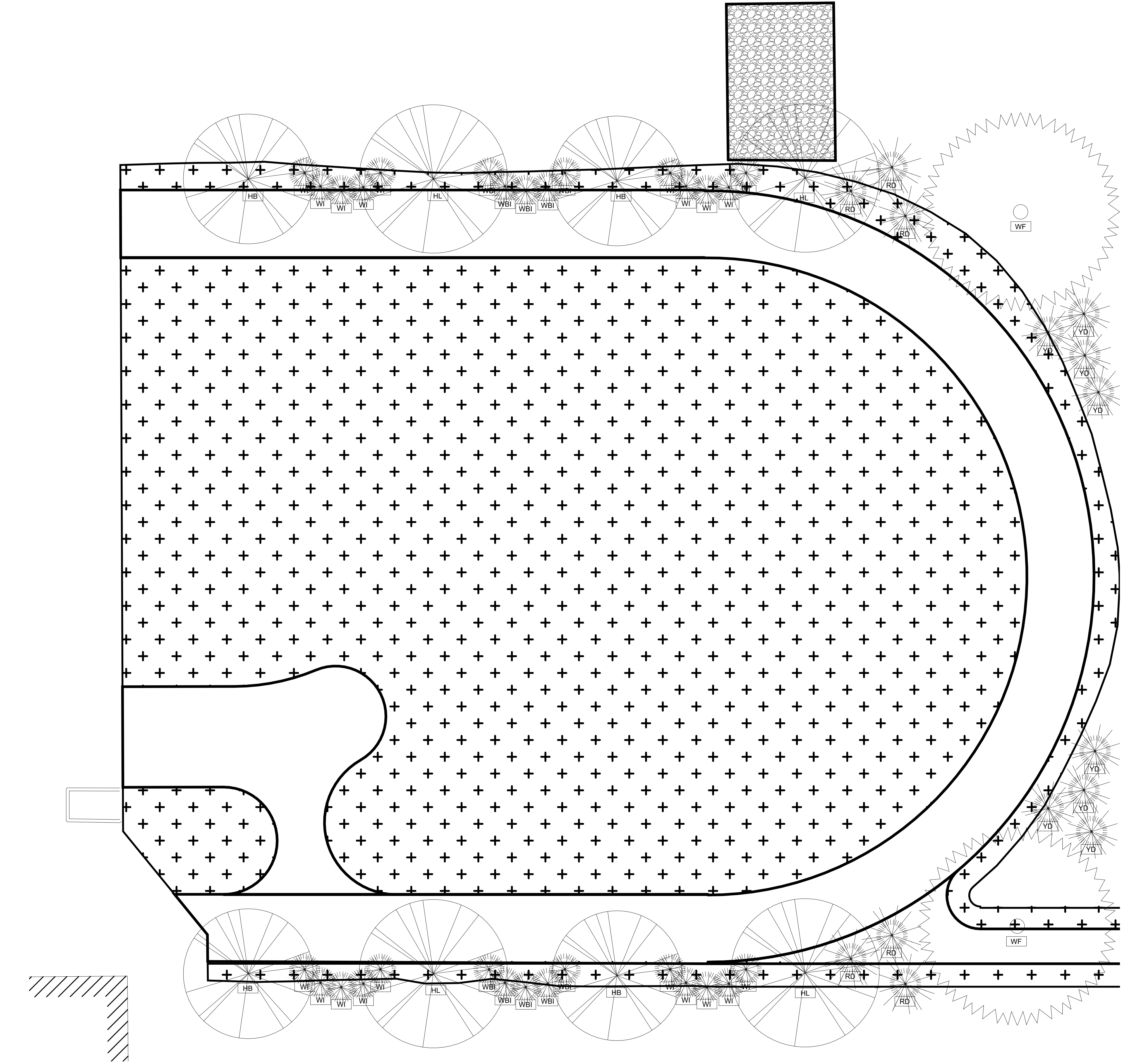
700.11TH ST  
SUITE 200  
MARION, IOWA  
52302  
102 S. FREDERICK  
AVE  
SUITE #1  
OELWEIN, IOWA  
50662  
WWW.MARTINGARDNERARCH.COM  
(319) 377-7604

A103

2200024



2/27/2023, 4:15:27 PM  
A:\001\0001\Johnson County Poor Farm\Poor Farm.mxd  
RVT: YSR/GCA/2023



1  
A104  
AMPHITHEATER PLANTING  
PLAN  
1/8" = 1'-0"

PLANTING SCHEDULE					
Type Mark	NAME	BOTANICAL NAME	FORM	QTY.	COMMENTS
HB	American Hornbeam - 35'	CARPINUS CAROLINIANA	TREE	4	
HL	Honey Locust - 40'	GLEDITSIA TRIACANTHOS 'SUNBURST'	TREE	4	
RD	Dogwood Red Osier - 9'	CORNUS SERICEA	SHRUB	6	
WBI	Indigo Wild Blue - 4'	BAPTISIA AUSTRALIS	HERB	10	
WF	Fir White - 70'	ABIES CONCOLOR	TREE	2	
WI	Indigo White - 4'	BAPTISIA ALBA	HERB	20	
YD	Dogwood Yellow Twig - 8'	CORNUS SERICEA	SHRUB	8	

PRELIMINARY - NOT FOR CONSTRUCTION

ISSUE DATE:	Issue Date
REVISION	REVISION
NUMBER:	NUMBER:
DATE:	DATE:

JOHNSON COUNTY  
Poor Farm Healing Trail

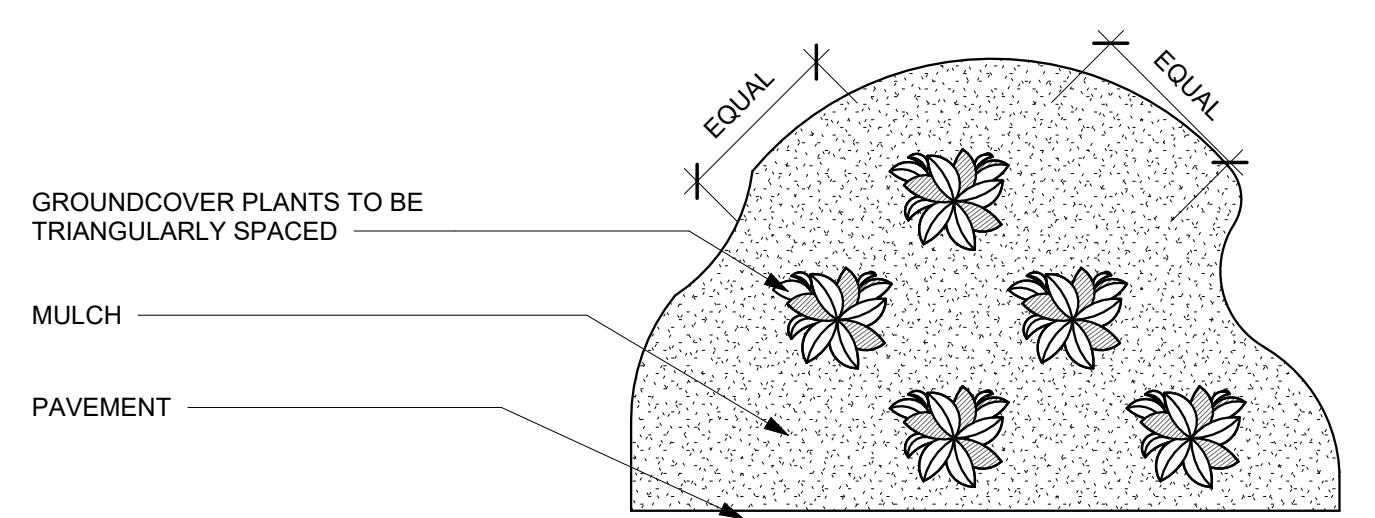
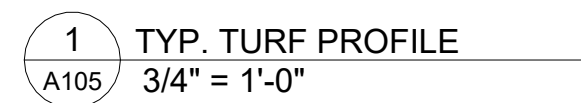


700.11TH ST  
SUITE 200  
MARION, IOWA  
52302  
102 S. FREDERICK  
AVE  
SUITE #1  
OELWEIN, IOWA  
50662  
WWW.MARTINGARDNERARCH.COM  
(319) 377-7604

A104

2200024

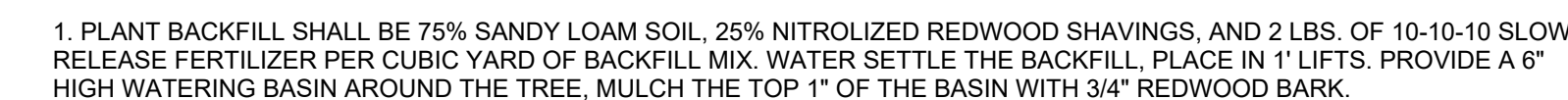




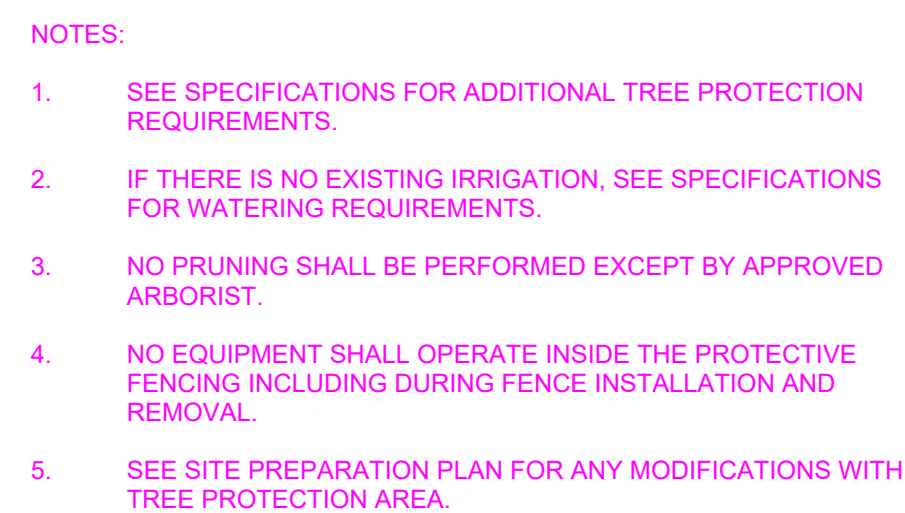
1. SEE PLANTING SCHEDULE FOR GROUNDCOVER SPECIES, SIZE, AND SPACING DIMENSION.
2. SMALL ROOTS (1/4" OR LESS) THAT GROW AROUND, UP, OR DOWN THE ROOT BALL PERIPHERY ARE CONSIDERED NORMAL CONDITION IN CONTAINER PRODUCTION AND ARE ACCEPTABLE. HOWEVER THEY SHOULD BE ELIMINATED AT THE TIME OF PLANTING. ROOTS ON THE PERIPHERY CAN BE REMOVED A THE TIME OF PLANTING. (SEE ROOT BALL SHAVING CONTAINER DETAILS).
3. SETTLE SOIL ROOT BALL OF EACH GROUNDCOVER PRIOR TO MULCHING.

2  
A105

TYP. PLANT BED AT PAVEMENT  
EDGE  
NTS



3 TREE STAKING DETAIL  
A105/ 3/4" = 1'-0"



4 TREE PROTECTION  
A105 1/2" = 1'-0"