



NEEDS ASSESSMENT

JOHNSON COUNTY
SHERIFF'S OFFICE
AND JAIL

VOLUME II CONCEPTUAL DESIGN

July 1, 2024

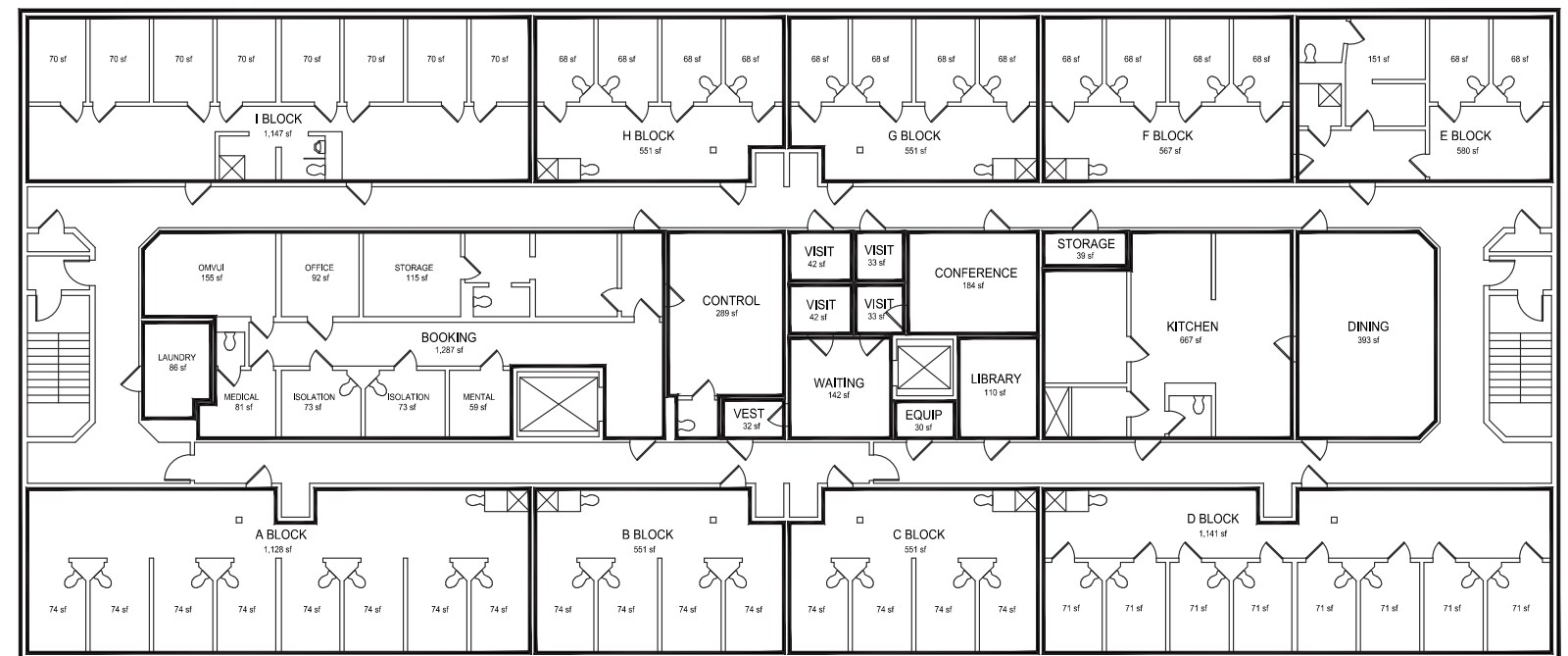
SHIVEHATTERY
ARCHITECTURE+ENGINEERING

Existing Conditions – Areas of Non-Compliance

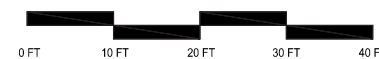
- Jail standards
 - Existing linear design operationally inefficient
- Classification needs
 - Nine (9) existing housing units do not comply with Iowa Standards and are undersized
- Limited handicap accessibility
- Limited capacity, no room for growth
- Questionable structural integrity



UPPER LEVEL
(13,928 GROSS SQUARE FOOTAGE)



LOWER LEVEL
(12,752 GROSS SQUARE FOOTAGE)



Specific Compliance Concerns

Square Footage – approximately 27,000 SF

Approximately 14,000 SF housing and housing support

Approximately 13,000 SF law enforcement and forward operations

Law Enforcement, Forward Operations, Public Records

1. Poor public access to facility
2. No space provided for public interaction, activities, and or public awareness programs
3. Limited conference room space
 - No space provided to accommodate all staff meetings
4. Undersized evidence storage space



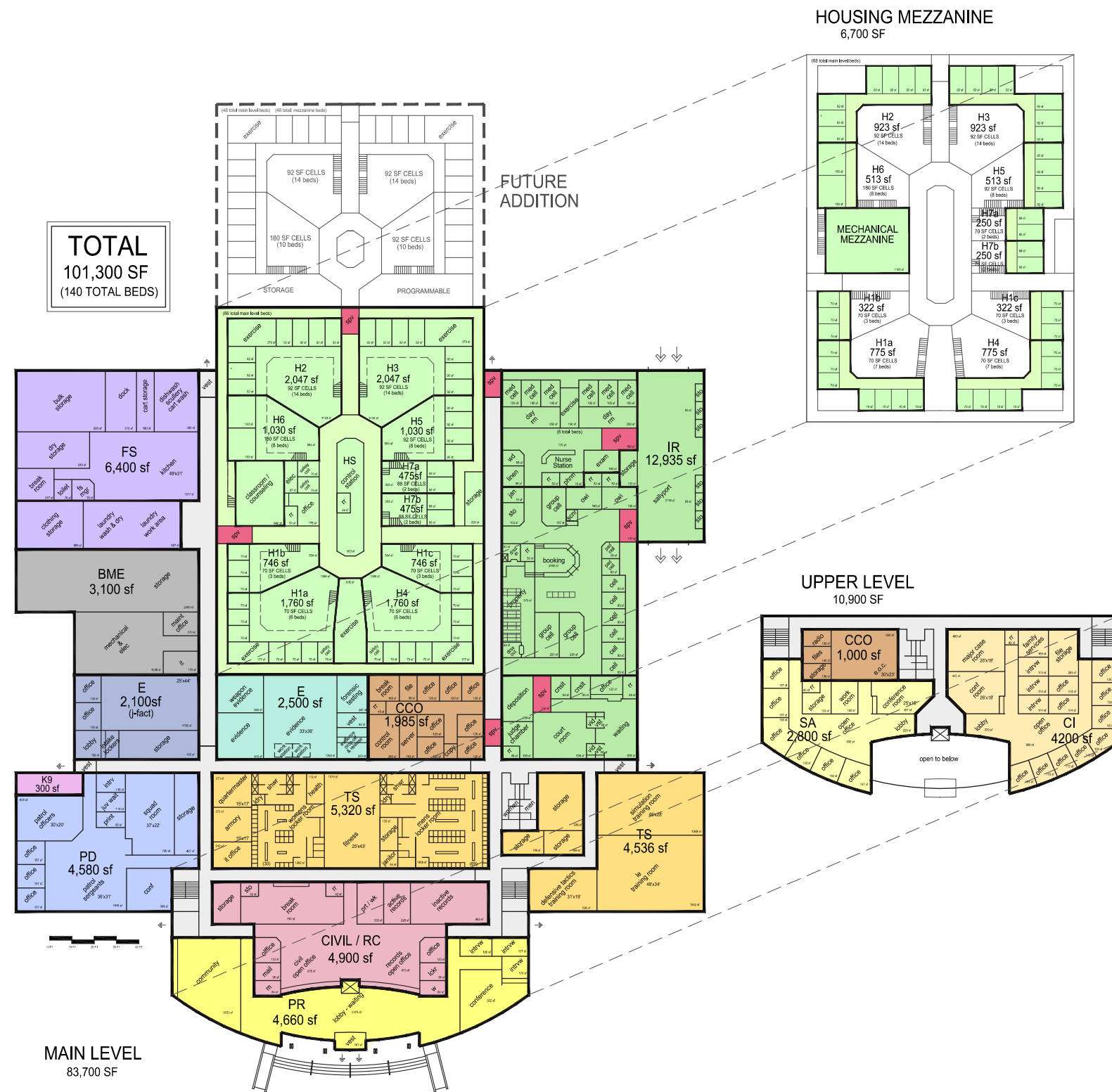
Specific Compliance Concerns

Law Enforcement, Forward Operations, Public Records (continued)

5. No training amenities provided for staff
6. Undersized locker/shower amenities
7. Non-drive through sally port
 - Hazard backing out of sally port onto public right of way
8. Undersized administrative area
9. Undersized patrol area
10. Undersized investigations area
11. Limited space for storage of public records
12. Undersized/poorly placed interview rooms



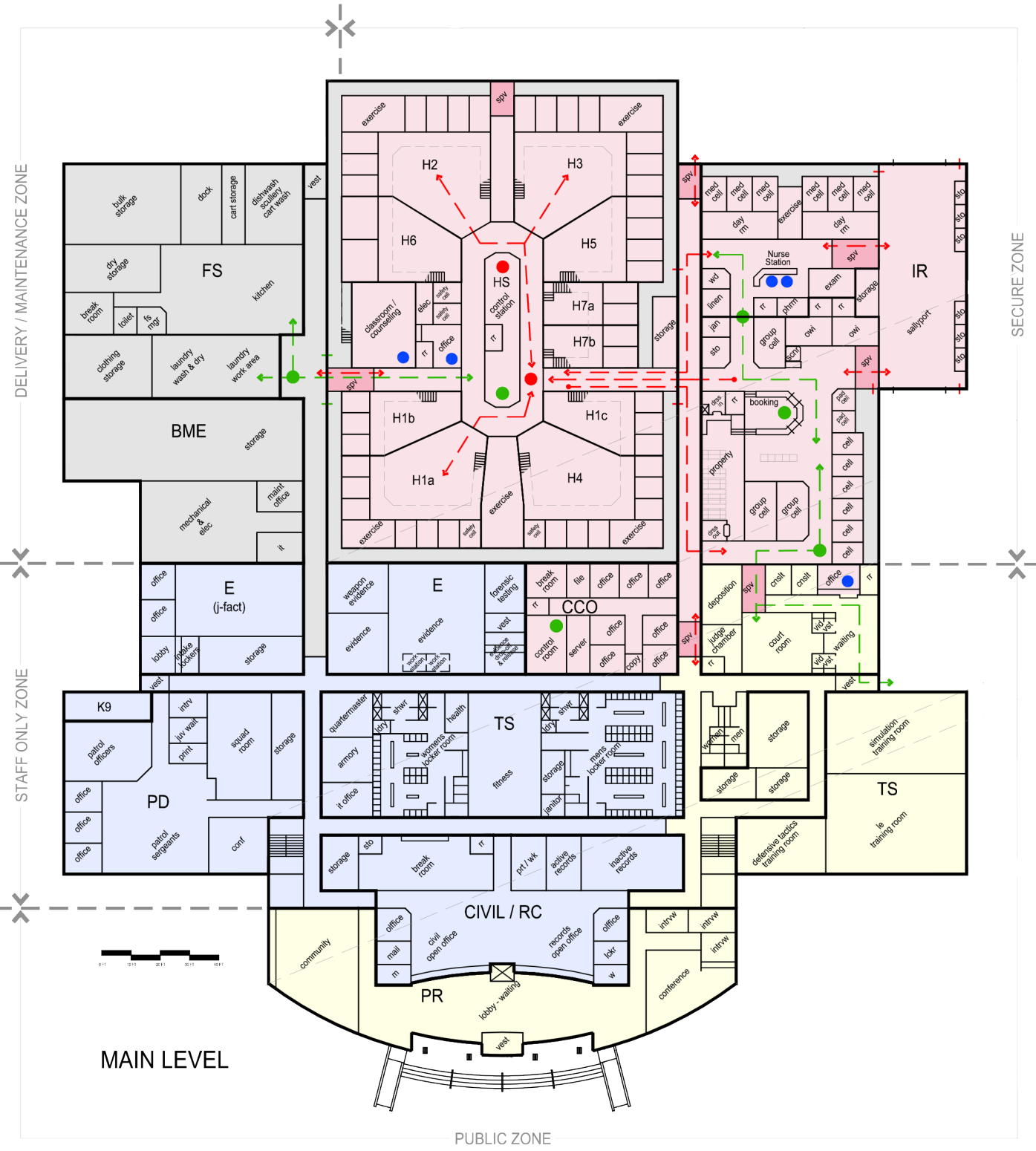
Factors Influencing Conceptual Plans



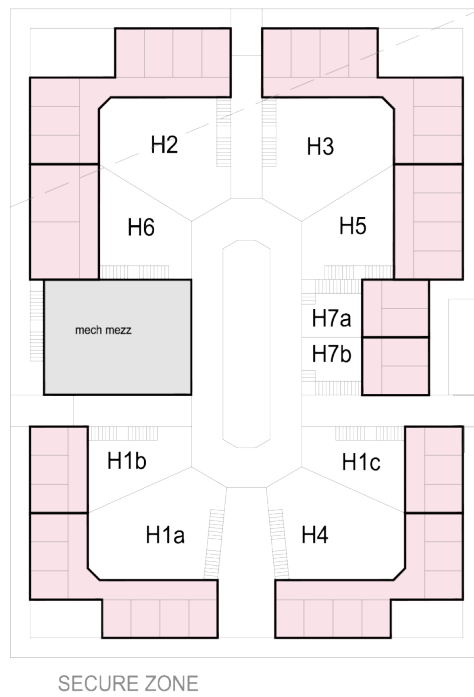
- Law Enforcement and Training Spaces – Promote community access
- Zoned Circulation to enhance security
- Podular Housing Unit and Control Design – Promote staff efficiency and direct lines of sight
- Flexible for Future Expansion (support core designed for full build out)



Staffing Considerations



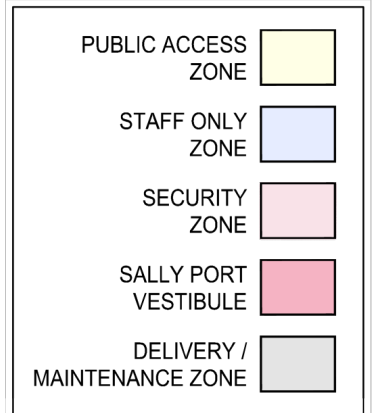
HOUSING MEZZANINE



UPPER LEVEL



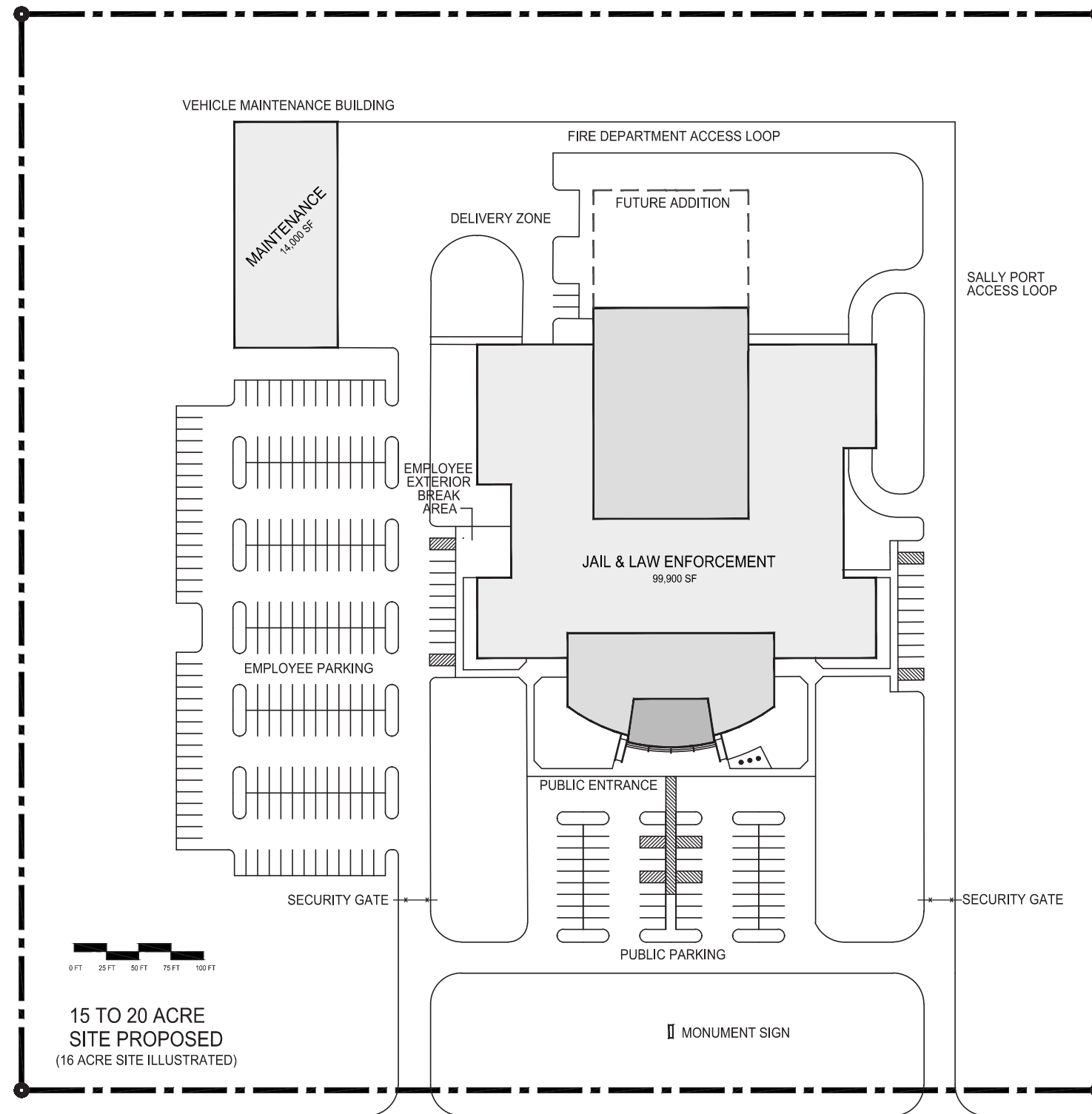
Note: No Additional Staff Needed to Operate New Jail



- 6 x 1.3 SRF = 8 STAFF POSITIONS (Green dot)
 - 5 x 1.0 SRF = 5 STAFF POSITIONS (Blue dot)
 - 2 x 5.1 SRF = 11 STAFF POSITIONS (Red dot)
- TARGETED = 24 STAFF POSITIONS**
(5.83 TO 1 RATIO)



Site Considerations



- Site Area
- Vehicular Circulation and Parking
- Building Identity
- Expansion Potential
- Site Utilities
- Site Utilization
- Topography
- Adjacent Development Impact
- Zoning Capacity
- Site Development Costs

