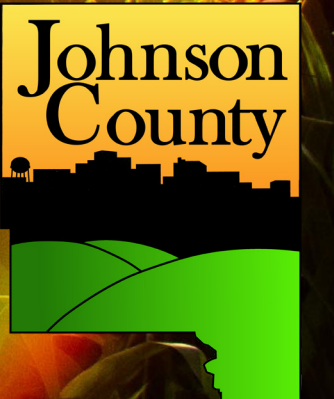




AMERICAN RESCUE PLAN ACT LOCAL FISCAL RECOVERY FUND

A framework for inclusive long-term
economic recovery in Johnson County





AGENDA

BACKGROUND

- American Rescue Plan Act
- Local Fiscal Recovery Funds
- Johnson County ARPA Leadership Team

FRAMEWORK FOR FUNDING PRIORITIES

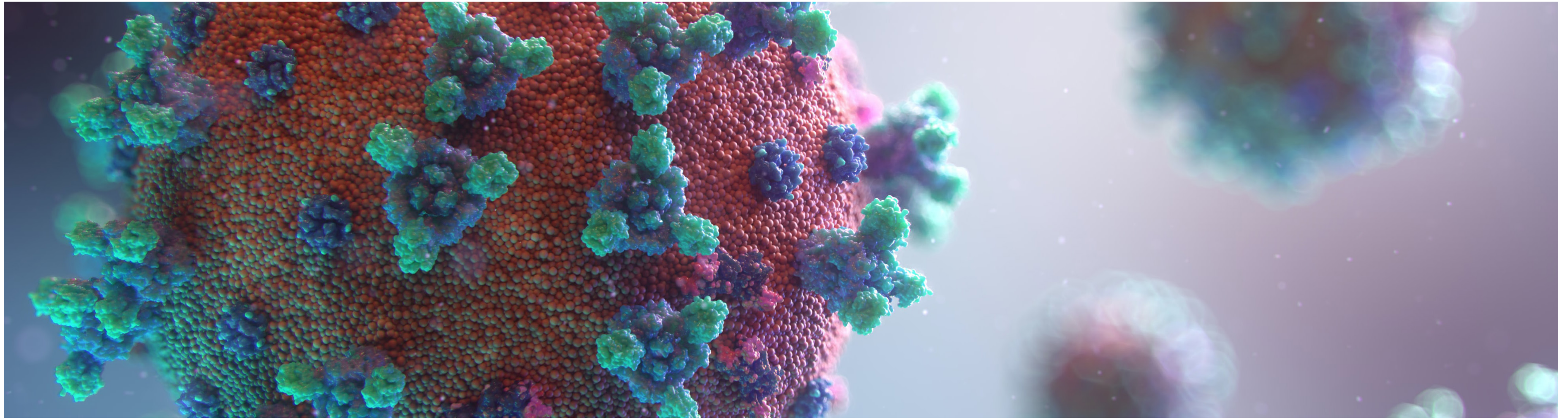
- Stabilize
- Strategize
- Organize

TIMELINE

- Planning and Outreach
- Informed Decision Making
- Allocation and Administration
- Oversight and Evaluation of Outcomes

RESPONSIBILITY & ADMINISTRATION

- Compliance
- Capacity
- Transparency



OVERVIEW

RESOURCES TO RESPOND AND RECOVER

Since the first case of coronavirus disease 2019 (COVID-19) was discovered in the United States in January 2020, the disease has infected over 32 million and killed more than 575,000 Americans. The disease impacted every part of life—social distancing became a necessity, businesses closed, schools transitioned to remote education, and millions of Americans lost their jobs.

In April 2020, the national unemployment rate reached its highest level in more than 70 years following the most severe month-over-month decline in employment on record.

Amid this once-in-a-century crisis, local governments have been called on to respond at an immense scale.

On March 11, 2021 the American Rescue Plan Act (ARPA) was signed into law by President Biden. The Coronavirus Local Fiscal Recovery Fund is intended to provide support to local governments in responding to the impacts of COVID-19 in their communities.

-U.S. Department of the Treasury, Coronavirus State and Local Fiscal Recovery Funds, Interim Final Rule (p. 2-6)

ARPA FUNDING BREAKDOWN

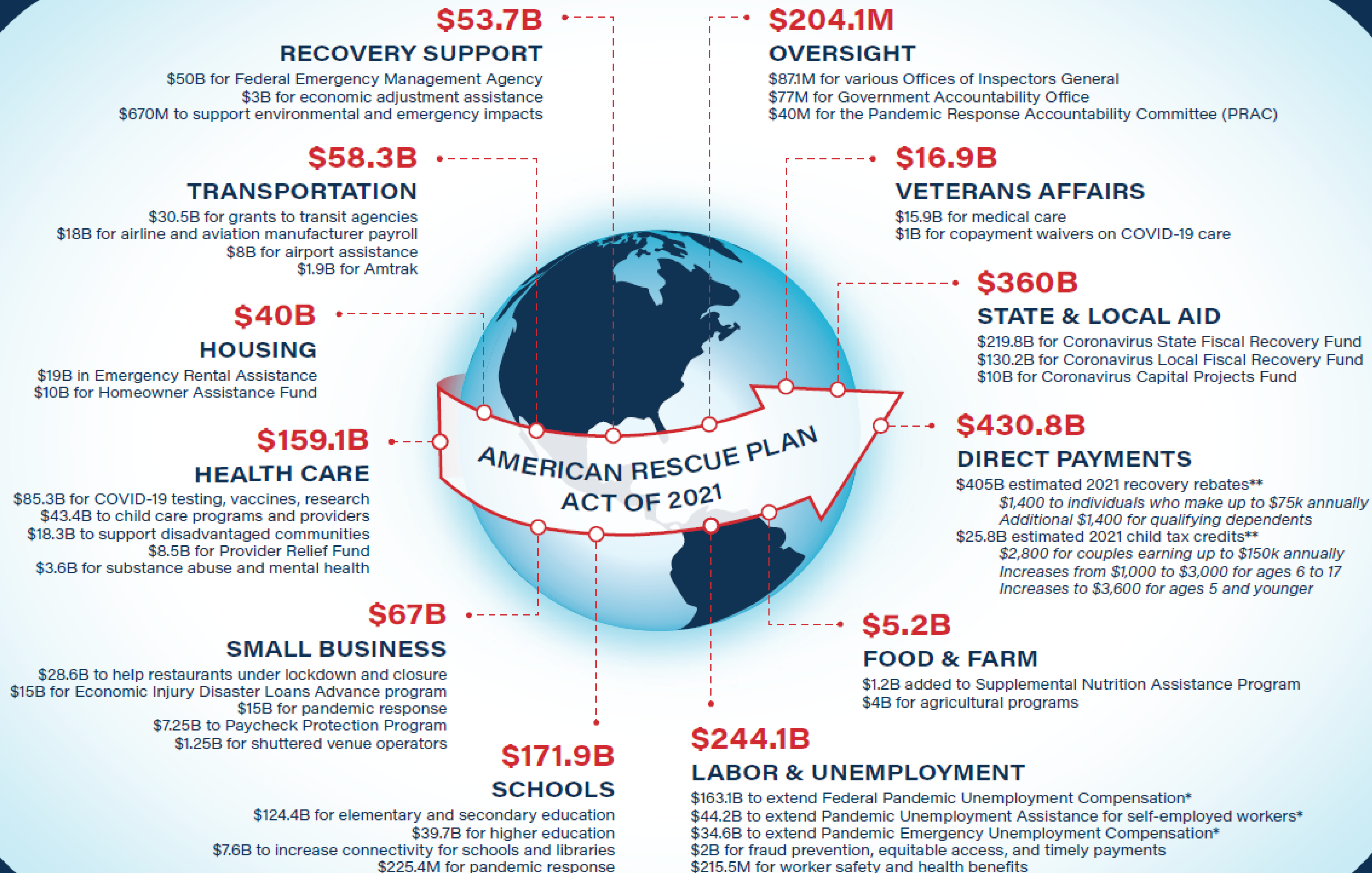


As part of our mission to promote transparency of pandemic spending, the PRAC will oversee the pandemic relief funds in the American Rescue Plan.

Note: This graphic addresses specific funds related to pandemic response and recovery, covering \$1.6T of the total \$1.9T in the American Rescue Plan Act.

* Estimated amounts for unemployment extensions calculated by Committee for a Responsible Federal Budget and found at www.crfb.org.

** Estimated amounts for recovery rebates and child tax credits supplied by Joint Committee on Taxation via Treasury Inspector General for Tax Administration.



The PRAC was established in March 2020 by the CARES Act to promote transparency and support independent oversight of the funds provided by the CARES Act, the American Rescue Plan Act, and other emergency pandemic spending bills. In addition to its coordination and oversight responsibilities, the PRAC is tasked with supporting efforts to prevent and detect fraud, waste, abuse, and mismanagement and to help mitigate major risks that cut across program and agency boundaries.

[PandemicOversight.gov](https://pandemicoversight.gov)

[@COVID_Oversight](https://twitter.com/COVID_Oversight)

LOCAL FISCAL RECOVERY FUNDS

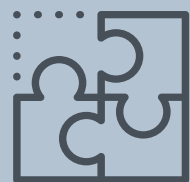
ALLOWABLE USES

- > To respond to the public health emergency or its negative economic impacts, including assistance to households, small businesses, and nonprofits, or aid to impacted industries such as tourism, travel, and hospitality;
- > To respond to workers performing essential work during the COVID-19 public health emergency by providing premium pay to eligible workers;
- > For the provision of government services to the extent of the reduction in revenue due to the COVID-19 public health emergency relative to revenues collected in the most recent full fiscal year prior to the emergency (FY2019); and
- > To make necessary investments in water, sewer, or broadband infrastructure.



SUPPORT PUBLIC HEALTH RESPONSE

Fund COVID-19 mitigation efforts.



REPLACE PUBLIC SECTOR REVENUE LOSS

Provide government services to the extent of the reduction in revenue.



PREMIUM PAY FOR ESSENTIAL WORKERS

Offer additional support to those in critical infrastructure sectors.



ADDRESS NEGATIVE ECONOMIC IMPACTS

Respond to economic harms to workers, families, small businesses, and the public sector.



BROADBAND INFRASTRUCTURE

Provide unserved or underserved locations with new or expanded broadband access.



WATER AND SEWER INFRASTRUCTURE

Improve access to clean drinking water and invest in wastewater and stormwater infrastructure.

ARPA LEADERSHIP TEAM

The Board of Supervisors is taking necessary steps to ensure Johnson County acts swiftly, responsibly, and equitably in the administration of our \$29.3M ARPA Local Fiscal Recovery Fund allocation. Planning and implementation will reflect the importance of public input, transparency, and accountability. This process involves engagement with residents, County departments and offices, surrounding public entities, and community stakeholders.

The ARPA Leadership Team convened in February 2021, meets weekly, and is comprised of County staff, department heads, and elected officials responsible for the planning, compliance, disbursement, and reporting of federal funding. The purpose of the APRA Leadership Team is to:

- create structure and operational support;
- conduct research and outreach;
- make informed recommendations to the Board; and
- develop processes and procedures to ensure federal requirements are met and funding is effectively and equitably administered.



MEMBERS

Pat Heiden Chairperson

Lisa Green-Douglass Supervisor

Mike Hensch Executive Director

Donna Brooks Grants Coordinator

Ray Forsythe Special Projects Manager

Allison Wells Grants Assistant

Kelli Andresen Communications Coordinator

Ryan Maas Assistant County Attorney

Dana Aschenbrenner Finance Director

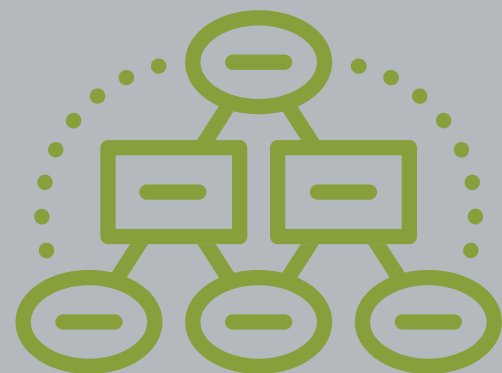
Dan Grady Budget Analyst

ARPA LEADERSHIP TEAM ACTIVITIES

BUILD STRUCTURE THROUGH FUNDING FRAMEWORK AND GUIDING PRINCIPLES

Create procedures to ensure consistent and equitable processing.

01



ACTION ITEMS

ITEM 1	Lead with compliance
ITEM 2	Recommend framework
ITEM 3	Create work plan
ITEM 4	Report activity

CONDUCT OUTREACH TO DEVELOP FUNDING PRIORITIES AND INFORM DECISION-MAKING

Develop mechanisms for consistent communication and equitable feedback.

02



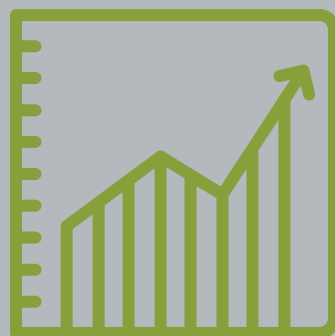
ACTION ITEMS

ITEM 1	Build website
ITEM 2	Conduct surveys
ITEM 3	Hold public input sessions
ITEM 4	Apply the input

EVALUATE OUTCOMES FOR IMPACTS AND PROCESS IMPROVEMENT OPPORTUNITIES

Monitor activities through regular reporting, site visits, and SMART goals.

03



ACTION ITEMS

ITEM 1	Define long-term objectives
ITEM 2	Identify opportunities
ITEM 3	Develop metrics
ITEM 4	Monitor and report

JOHNSON COUNTY

It is the mission of the Johnson County Board of Supervisors to enhance the quality of life of residents by providing exceptional public services in a collaborative, responsive, and fiscally-accountable manner.

True to our mission, the Board will take a three-pronged approach to investing Johnson County's ARPA Local Fiscal Recovery Funding:



STABILIZE OUR COMMUNITY THROUGH EQUITY- FOCUSED RESPONSE

- Replace County budget deficits incurred as a result of COVID-19 closures and pandemic-related economic slowdown.
- Respond to economic harms to workers, families, small businesses, impacted industries, and the public sector.
- Prioritize short-term investments with lasting impacts.
- Move quickly to stimulate recovery.



STRATEGIZE TOGETHER TO INVEST IN FUTURE PROSPERITY

ARPA allows local governments to invest in infrastructure and launch programs to support economic recovery and growth, with additional flexibility for the hardest-hit communities and families.

- Immediacy
- Inclusivity
- Future Prosperity
- Complementarity



ORGANIZE OUR RESOURCES TO ENSURE INCLUSIVE RECOVERY

- Build a collaborative team for effective and equitable deployment of funds.
- Explore Joint Entity committee for strategic investments and impact monitoring to avoid duplicated efforts.
- Conduct a series of public input sessions in varying formats to meet the people where they are.



01

IMMEDIACY

Local Fiscal Recovery Funds provide an infusion of resources to help turn the tide on the pandemic, address economic fallout, and lay the foundation for a strong and equitable recovery. Funding objectives support urgent COVID-19 response efforts, replace public sector revenue loss, and prioritize immediate economic stabilization for households and businesses.

03

FUTURE PROSPERITY

Johnson County will receive two ARPA disbursements over a year. Funds must be obligated by December 31, 2024 and spent by December 31, 2026. Local leaders have a chance to invest in future prosperity by prioritizing long-term inclusive economic growth over brief stimulus spending.

02

INCLUSIVITY

ARPA funding should be used to address the systemic public health and economic challenges that contributed to more severe impacts of the pandemic among low-income communities and people of color. Public benefits navigators or "community navigators" can be funded to assist community members and ensure equitable access to technical and capital assistance.

04

COMPLEMENTARITY

ARPA investments can boost Johnson County priorities all ready in place through strategic planning, economic development planning, and comprehensive planning. Johnson County will utilize ARPA funds to complement existing County plans and priorities.

Guiding Principles for ARPA Local Fiscal Recovery Investments

1. Assess government operations and community needs to develop a plan for recovery. Build a framework that supports consistent, responsive, and inclusive action. Rebuild public sector capacity by rehiring staff and implementing economic relief programs.
2. Mitigate the spread of COVID-19 through equity-focused services. Enhance public health data systems, make capital investments in public facilities to meet pandemic operational needs, and support medical and public health services for vulnerable populations.
3. Use each revenue source strategically. Identify linkages between community needs and other funded programs under the American Rescue Plan Act. Align funding priorities with other public entities. Save Local Fiscal Recovery Funds for gaps and priorities not eligible for other federal and state assistance programs.
4. Prioritize relief and recovery efforts to help disproportionately impacted populations and communities, including residents, workers, and small businesses.
5. Invest in housing, address educational disparities, and promote healthy childhood environments.

Serving the hardest-hit communities and families:

- > Promote healthy childhood environments, including new or expanded high-quality childcare.
- > Address educational disparities through new or expanded early learning services.
- > Expand services to address social, emotional, and mental health needs.
- > Address health disparities and social determinants of health through funding for community health workers, public benefit navigators, remediation of lead hazards, and community violence intervention programs.

ADDRESS NEGATIVE ECONOMIC IMPACTS

ASSISTANCE STRATEGIES FOR FISCAL RECOVERY AND ECONOMIC GROWTH



To help alleviate the economic hardships caused by the pandemic, Local Fiscal Recovery Funds enable Johnson County to provide a wide range of assistance to individuals and households, small businesses, and impacted industries. To achieve these goals, Johnson County may employ this funding to execute a broad array of loan, grant, in-kind assistance, and counseling programs to enable small businesses to rebound from the downturn.

PREMIUM PAY FOR ESSENTIAL EMPLOYEES

Fiscal Recovery Funds may be used to provide premium pay (an additional \$13/hour up to \$25k per individual) to eligible workers performing work during the COVID-19 public health emergency or to provide grants to third-party employers with eligible workers performing essential work.

- > Any work performed by an employee of state, local, or tribal government
- > Workers at farms, food production facilities, grocery stores, and restaurants
- > Janitors and sanitation workers
- > Public health and safety staff
- > Childcare workers, educators, and other school staff
- > Social service and human services staff
- > Staff at nursing homes, hospitals, and home care settings

Essential work is defined as:

- Work involving regular in-person interactions or regular physical handling of items that were also handled by others
- A worker would NOT be engaged in essential work, and accordingly may not receive premium pay, for telework performed from a residence.

Other previsions related to premium pay:

- Premium pay can be retroactive.
- Recipients have discretion to designate additional sectors.
- Additional reporting requirements in certain cases (grants to third-party employers).

TIMELINE OF ACTIVITIES AND PERTINENT DEADLINES

AMERICAN RESCUE PLAN ACT

February 22, 2021: ARPA Leadership Team convenes at Johnson County

March 11, 2021: President signs ARPA into law

May 10, 2021: U.S. Treasury releases guidance

May 20, 2021: Johnson County receives first tranche of Local Fiscal Recovery Fund allocation

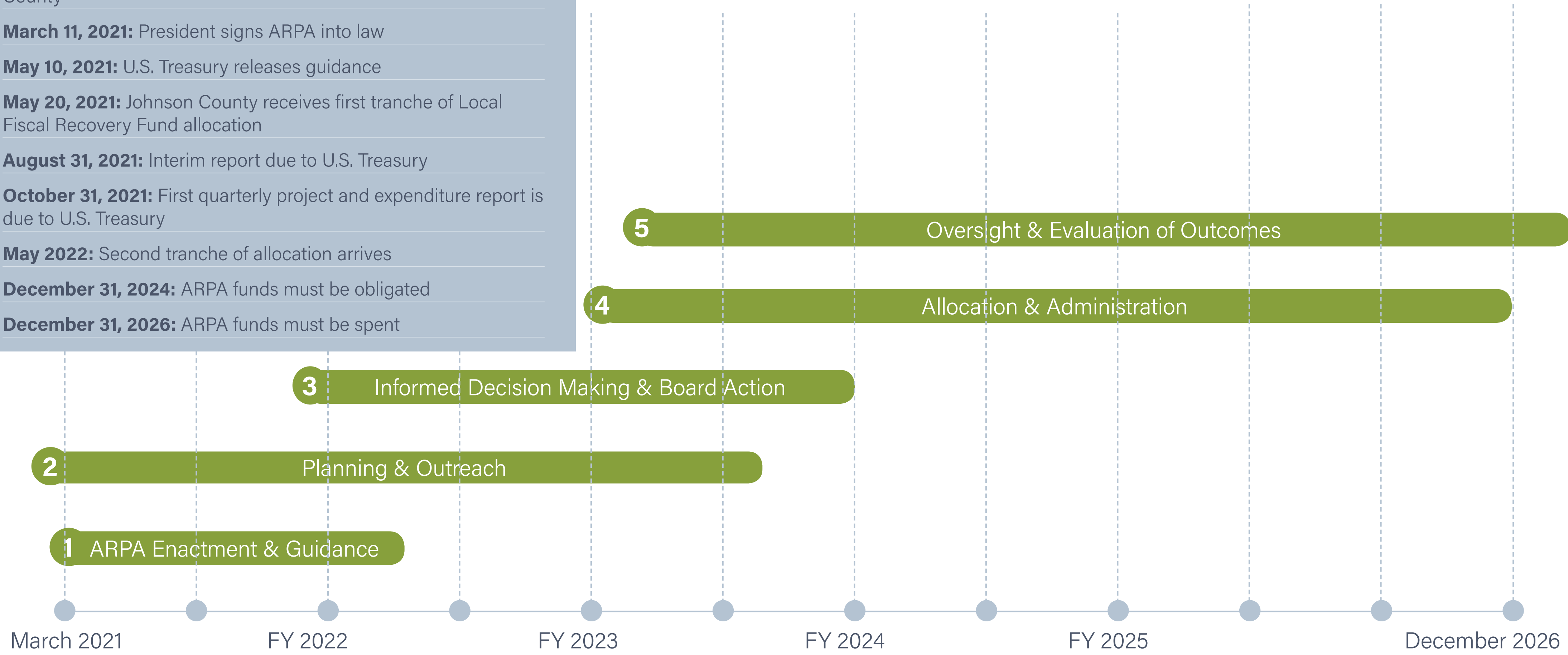
August 31, 2021: Interim report due to U.S. Treasury

October 31, 2021: First quarterly project and expenditure report is due to U.S. Treasury

May 2022: Second tranche of allocation arrives

December 31, 2024: ARPA funds must be obligated

December 31, 2026: ARPA funds must be spent



RESPONSIBILITY AND ADMINISTRATION

The Board of Supervisors is the legislative body of Johnson County and has the ultimate decision-making authority on the use of ARPA Local Fiscal Recovery Funds.

The Board will use thoughtful strategic planning processes, including:

- > Follow allowable uses under ARPA
- > Comply with State and local laws and ordinances
- > Convene all stakeholders and build consensus
- > Communicate with other local public entities
- > Collaborate with community partners and service organizations
- > Ensure transparency, accountability, and compliance throughout
- > Use organizational planning documents for complementarity



COMPLIANCE

Johnson County will follow U.S. Treasury guidance, allowable uses, and federal requirements.

TRANSPARENCY

Johnson County will host public input sessions, provide regular updates at BOS work sessions and DHEO meetings, and use clear, consistent, and accessible communication.

ACCOUNTABILITY

Johnson County ARPA Leadership Team will develop guiding principles, policies, processes, and procedures to ensure equity and compliance.

EFFECTIVE ADMINISTRATION

ORGANIZATIONAL CAPACITY

Consider Johnson County's current organizational capacity, including:

- Core capabilities
 - What JC does well
 - What JC could do better
- Knowledge base
 - Prerequisite knowledge and skills needed to carryout ARPA planning, oversight, management, reporting, and compliance.
 - What we have vs. what we need
- Change capability
 - Consider the speed with which Johnson County is able to redirect its resources and mobilize toward providing new or different public services.
- Organizational culture
 - Johnson County's current values and beliefs and how they affect ongoing development of capacity.

ORGANIZATIONAL INFRASTRUCTURE

Johnson County's structures, processes, and systems institutionalize procedures and expectations to ensure consistent execution regardless of staff or leadership changes.

County systems and processes give structure to the organization, support its key functions, and embed routine practices.

Consider:

- Governance and decision-making structures
- Policies, operating procedures, and process documentation needs.
- Adopting a county-wide approach to ARPA processes and reporting.

ORGANIZATIONAL RESOURCES

Inventory Johnson County's current organizational resources including:

- Staffing
 - What we have
 - What we need
- Fiscal resources
 - Leverage Local Fiscal Recovery Fund allocation with other funding sources.
- Facilities, equipment, and technology
 - What we have
 - What we need
- Information resources
 - What we have
 - What we need



INITIAL ACTION STEPS

Thanks for your time and attention. The ARPA Leadership Team will provide regular updates to the Board of Supervisors as we move forward.

- > Meet with Supervisors one-on-one
- > Present findings of funding needs assessment
- > Finalize framework and guiding principles for funding priorities
- > Schedule public input sessions
- > Set timeline and goals for ARPA funding deployment

CONTACT INFO



913 S. Dubuque Street
Iowa City, IA 52240



Donna Brooks, Grants Coordinator
Phone: 319-688-8012



<https://www.johnsoncountyiowa.gov/arpa>
dbrooks@johnsoncountyiowa.gov

THANK YOU!

