



SECONDARY ROADS DEPARTMENT

JOHNSON COUNTY ENGINEER
Greg S. Parker, P.E.

ASSISTANT COUNTY ENGINEER
Rob Winstead, P.E. & P.L.S.

ASSISTANT COUNTY ENGINEER
Ed Bartels, P.E. & P.L.S

ASSISTANT COUNTY ENGINEER
Neil Shatek, P.E.

MAINTENANCE SUPERINTENDENT
Kevin Braddock

ASST. MAINTENANCE SUPERINTENDENT
Mike Hennes

*ROADSIDE VEGETATION MANAGER/
WEED COMMISSIONER*
Chris Henze

4810 MELROSE AVE. WEST, IOWA CITY IOWA 52246 TEL (319) 356-6046 FAX (319) 339-6133 www.johnson-county.com

Contact: Ed Bartels, Assistant Johnson County Engineer

Contact Number: 319-356-6046

Contact Email: ebartels@co.johnson.ia.us

Thursday April 23, 2020

For Immediate Release

F12 (120th Street NW)/Division Street Road Closure Project #LFM-120th--7X-52

Johnson County, Iowa – Weather and COVID-19 restrictions permitting, surface paving work on F12 (120th Street NW)/Division Street from Highway 965 to Iowa County, will begin as early as Thursday, April 30, 2019. Travelers should expect brief delays, lane closures, flaggers, and pilot cars. F12/Division Street will be closed to thru traffic in two locations near the Swisher Post Office as shown on the attached map starting May 04, 2020. A detour for local traffic will be established as shown on the map. An embargo restricting trucks over 10 tons remains in force on Division Street within the City Limits of Swisher.

L.L. Pelling Company, Inc. of North Liberty, Iowa is the prime contractor.

Please slow down and drive defensively in the work zone. Your patience and understanding is greatly appreciated while we work to complete these improvements as quickly as possible.

For updates on this project, visit the Secondary Roads Department, Road Construction Updates page via links on the Johnson County homepage (www.johnson-county.com) or by scanning the QR code below, or follow Secondary Roads on Twitter @JCSecondaryRoad.

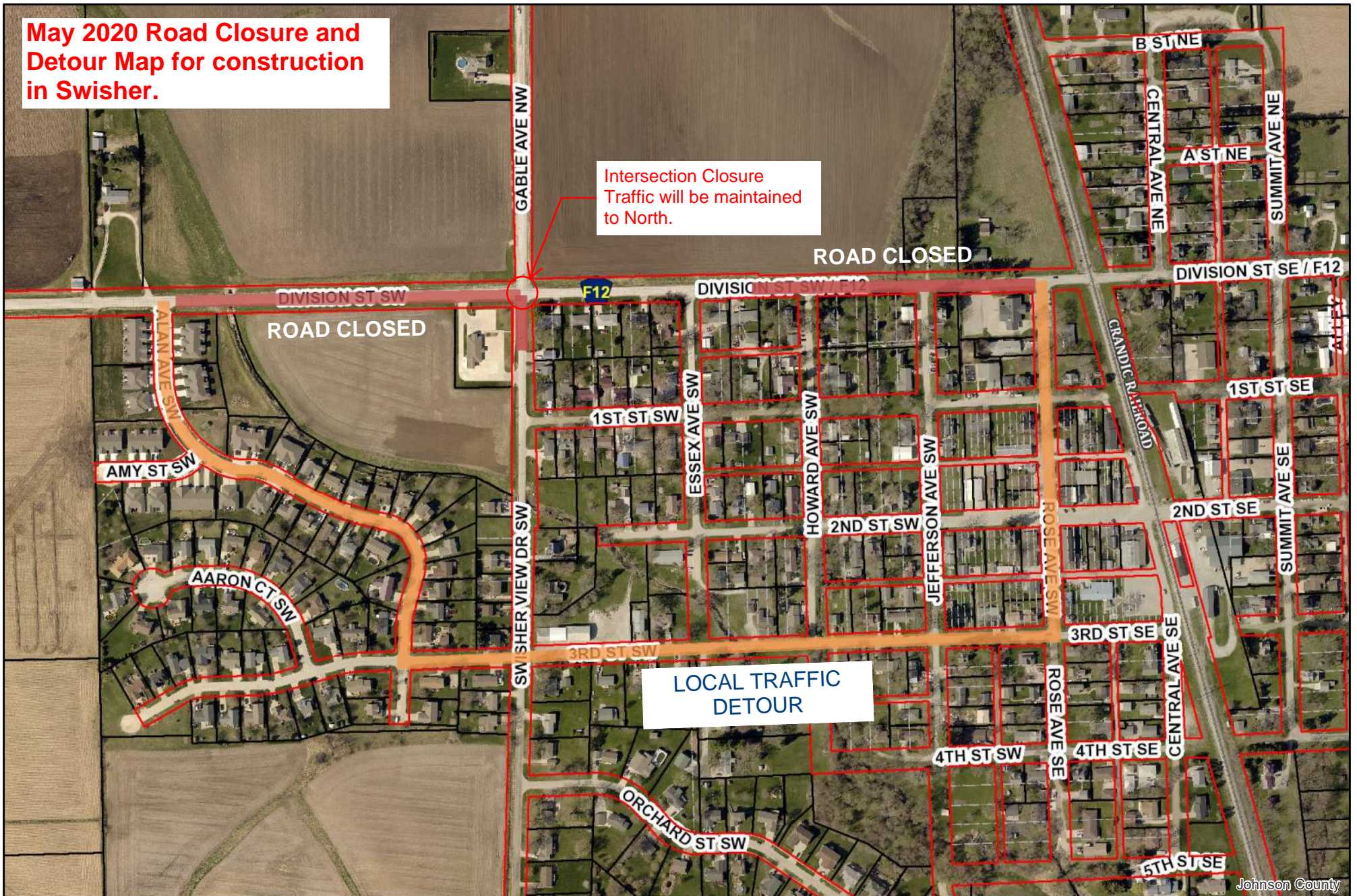
- END -



Scan QR Code to
be directed to our
Construction
Updates Webpage!

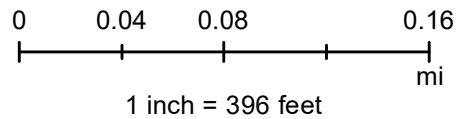
May 2020 Road Closure and Detour Map for construction in Swisher.

Intersection Closure
Traffic will be maintained to North.



Property Information Viewer

Printed: 4/23/2020



The information presented herein is intended to be an accurate representation of existing records. Johnson County assumes no liability for errors or omissions. Users relying on this information do so at their own risk.