

Scott Church Park

5409 American Legion Rd SE
Iowa City, IA 52240

Overview: Scott Church Park is a five-acre roadside park located six miles southeast of Iowa City at the junction of American Legion Road and Highway 6. The park is best used as a picnic area or a place for quiet retreat.

History: Scott Church Park has the distinction of being the first county park for Johnson County Conservation (JCC). It was acquired and developed by the fledgling Johnson County Conservation Board in 1965 under a sponsoring agreement from the Iowa Highway Commission for the development of a highway safety rest area. Over the years, JCC has enhanced the land by restoring native species. In 2001, a triangular-shaped area, approximately one half-acre in size was seeded to native grasses and forbs. A multiple-row shelter-belt composed of Red Cedar, Norway Spruce, High Bush Cranberry and Ninebark was planted along the property line. The prairie and shelter-belt provide badly needed nesting and winter cover for wildlife in a locale of intense row-crop agriculture.

Features: Facilities include a picnic area, a swing set, a mowed play area, potable water supply and a latrine.

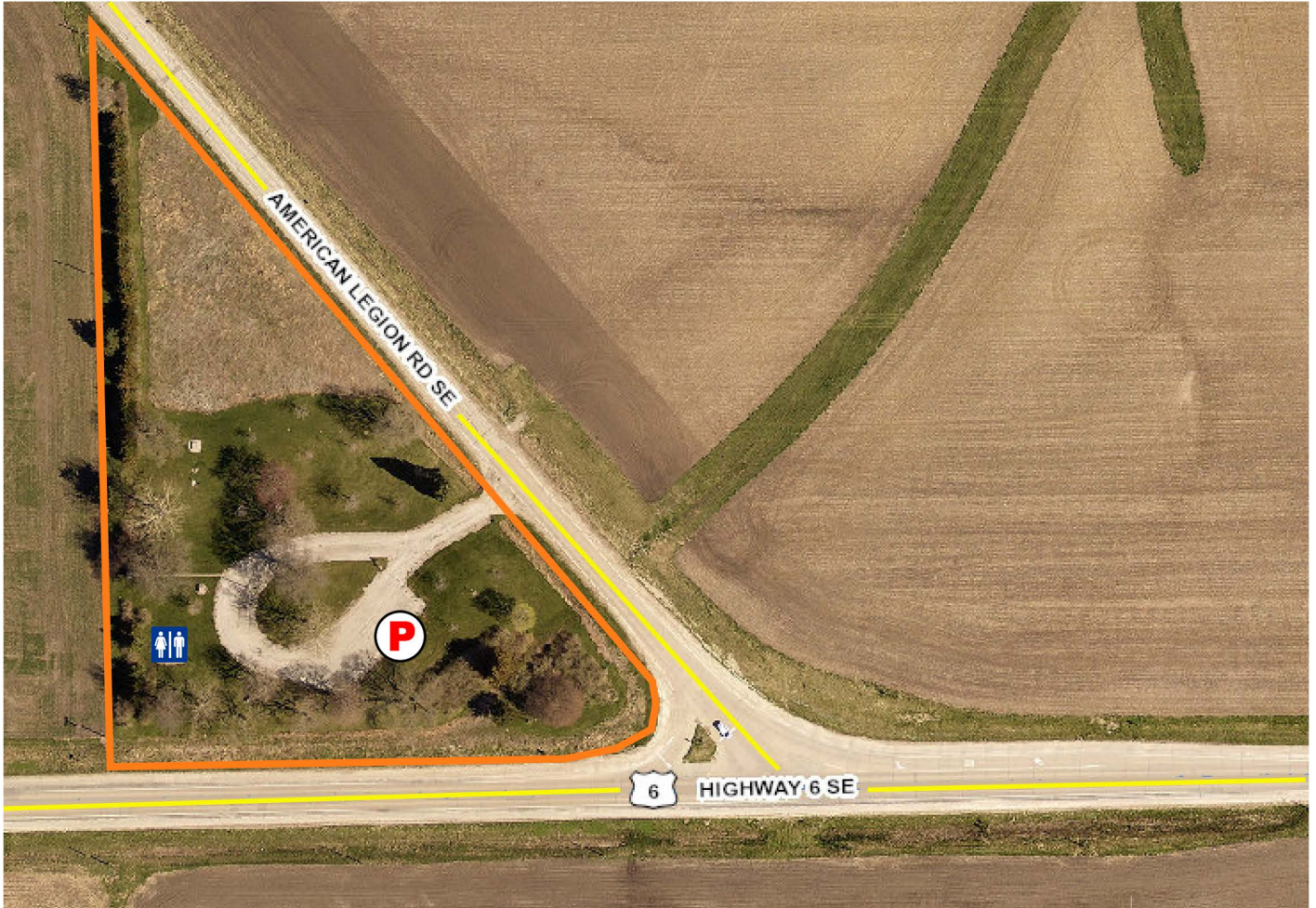
An aerial view of Scott Church Park in 1955.

Note the original gas station at the intersection of Highway 6 and American Legion Road and the church located near the back of the property.



Scott Church Park

5409 American Legion Rd SE
Iowa City, IA 52240



Legend

- Parking Area
- Property Boundary
- Restroom
- Road

