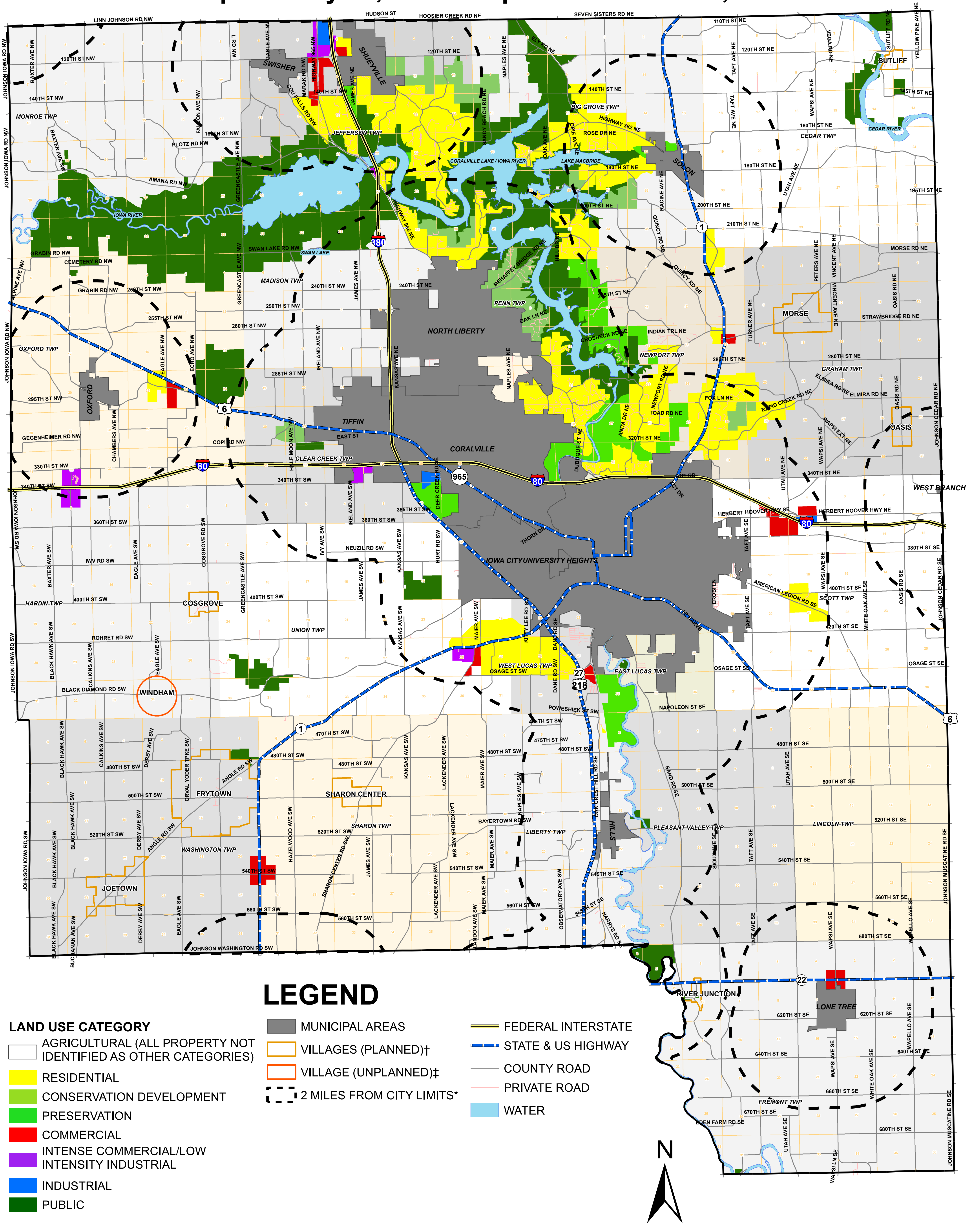




# Future Land Use Map

## Johnson County 2018 Comprehensive Plan

Adopted: May 17, 2018 Updated: October 8, 2020



### LEGEND

#### LAND USE CATEGORY

- AGRICULTURAL (ALL PROPERTY NOT IDENTIFIED AS OTHER CATEGORIES)
- RESIDENTIAL
- CONSERVATION DEVELOPMENT
- PRESERVATION
- COMMERCIAL
- INTENSE COMMERCIAL/LOW INTENSITY INDUSTRIAL
- INDUSTRIAL
- PUBLIC

MUNICIPAL AREAS

- VILLAGES (PLANNED)†
- VILLAGE (UNPLANNED)‡
- 2 MILES FROM CITY LIMITS\*

- FEDERAL INTERSTATE
- STATE & US HIGHWAY
- COUNTY ROAD
- PRIVATE ROAD
- WATER

\* Development applications on property within 2 miles of cities may be subject to additional standards and require city review. For properties in these areas, please see adopted fringe area agreement for each respective city.

† For property within each village boundary, please see the adopted village plan for development policies.

‡ The Village of Windham does not currently have a village boundary. The area shown is the approximate location of the village.

