

Conservation Connection

Johnson County Conservation Newsletter

Schwab-Burford Acquisition Creates Habitat Corridor

Kristen Morrow - Naturalist

Over one hundred more acres of beautiful and high-quality woodland are open to the public with the addition of new public lands to Johnson County Conservation! The Schwab-Burford Acquisition, located in the countryside between Solon and North Liberty, will provide an oasis for hikers, birders, creek stompers, mushroom hunters, and more!

In April 2018, Dick Schwab and Katherine Burford completed legal arrangements to transfer, through donation and sale, 132 acres of their land and holdings to Johnson County Conservation (JCC). This transfer includes the largest private donation in JCC's history. Currently named the Schwab-Burford Acquisition, this property is composed of more than one hundred acres of high-quality oak woodland and is located in one of the most biologically rich parts of the county.

The Acquisition creates a large expanse of connected wildlife habitat and corridor. The southern border of the property is adjacent to the Big Grove Preserve, a protected 80-acre woodland owned and managed by Bur Oak Land Trust. Big Grove Preserve, in turn, shares much of its border with lands associated with the Coralville Lake and managed by the U.S. Army Corps of Engineers. Not only are



Top: The Celebration Barn, a stone structure hand-built by Dick Schwab, is a notable feature included in the donated portion of the property. **Bottom:** Over 100 acres of oak-hickory woodland will be preserved as habitat and for public recreation.

Continued on pg 4

THE PEOPLE OF JCC

BOARD OF SUPERVISORS

Lisa Green-Douglass Chair

Rod Sullivan Vice Chair

Janelle Rettig

Royceann Porter

Pat Heiden

CONSERVATION BOARD

Alice Atkinson President

Larry Wilson Vice President

Gene Zdrazil Secretary

Connie Mutel

Bill Waldie

CONSERVATION STAFF

Executive Director

Larry Gullett

Office Manager

Dory Kjosa

Office Assistant

Emily Walker

Conservation Program Manager

Brad Freidhof

Naturalists

Kristen Morrow

Frances Owen

Ranger

Charlie Bray

Aaron Ohlsen

Natural Resource Manager

Dave Wehde

Natural Resource Mgmt. Specialists

Jeremy Rieck

Michael Alexander

Blake Harris

Operations Superintendent

Wade Schultz

Utility Person

Dave Gustafson

Mechanic

Josh Allen

Senior Maintenance Specialist

Gary Pidgeon

Field Workers

Terry Kinney

Ben Woltz

Seth Somerville

Trails Field Worker

Ed Kringle



Jonathan Payne, August 20, 1991 to April 22, 2019

Farewell to a Friend

It is with great sadness that we lost one of our staff members on April 22nd, 2019. Jonathan Payne, Custodian, joined our staff on September 11, 2018, and was responsible for keeping all the facilities and grounds clean and presentable to the public at F.W. Kent Park. He was an incredible person with high moral standards and one of the nicest people you will ever meet.

Jon was an accomplished musician, playing in orchestras and in church events. He earned his MA degree from the University of Iowa in brass, and his lifelong passion was to become a professional musician. Only recently he began to have second thoughts as he enjoyed working in conservation so much.

Jon was very focused on making sure everything he did was done at the highest level of perfection, and he always wanted to make sure he didn't disappoint anyone. We all very much enjoyed working with him and his sense of humor. He carefully observed and studied everything he participated in. This spring he helped the staff burn about 511 acres at Kent Park and was very intrigued with the burning process and nature of prairie fire.

We will miss him immensely and plan to plant a memorial tree in his honor at F.W. Kent Park. Jon's obituary may be viewed at: <https://gayandciha.com/tribute/details/3604/Jonathan-Payne/obituary.html>

JCC Project Updates:

Kent Park Lake Restoration Timeline:

May 24, 2019

Surfacing of road and trail across dam is completed; road opens across dam.



Connolly Construction Inc. employees grade the backslope of the dam in preparation for the prairie seeding.

June 13, 2019:

Late date for all other road system repairs to be complete.



Four submerged fish reefs will include spawning beds. The aquatic plants will be planted on the surface of the reefs.

July 8, 2019:

Lower lake level to four feet below normal levels for planting aquatic plants on fish reefs.



An observation deck on the control structure will provide great views of the lake and allow for maintenance of the control valve.

August 25, 2019

Raise lake to normal level. Lake restoration complete.

Hoover Trail Timeline:

2014 - 2017:

Nearly \$2.7 million in cost-share grants is awarded to JCC through various state and federal grants.

Mid June 2019

Phases 1 & 2 set for completion. These sections span from Solon to Polk Ave. and from Seven Sisters Road to Ely Road, respectively. Seeding will be complete and signage installed.

Mid June 2019

Construction begins on Phase 3. This is the trail section between Polk Blvd. and 140th Street.

Late 2019:

Construction on Phase 3 complete; trail opens to users!

JCC Welcomes Aaron Ohlsen as New Ranger

Aaron Ohlsen - Park Ranger I

I'm originally from Vinton, Iowa. Growing up I spent my free time hunting, fishing, and exploring our state's public land with family and friends. These activities and memories sparked my passion for conservation and led me to attend Kirkwood Community College, where I obtained my AAS degree in Parks and Natural Resources and later Upper Iowa University, where I received a Bachelor's degree in conservation management with a minor in criminal justice. Before starting with Johnson County Conservation, I was a seasonal park attendant for Linn County Conservation for several years and a park ranger intern for Poweshiek County Conservation.

During my free time I enjoy hunting upland game and turkey, fishing, hiking, and birding. Throughout the course of the year I hope to see you out in your county's parks and natural areas enjoying a favorite outdoor activity of your own.





connected natural lands vital to the health of our ecosystems, they also can provide more opportunities for the public. Going forward, JCC will work with Bur Oak Land Trust to create connected trail systems and a seamless experience when walking between the two properties. Together, the two preserves currently offer 2.5 miles of trails open to the public.

Much of the woodlands throughout the Acquisition and on the adjacent Big Grove Preserve are remnants. They resemble the open woodlands and savanna that intertwined with Eastern Iowa's prairies 200 years ago. The large oaks and hickories associated with these woodlands house a great diversity of native plants, birds, and mammals. Hikers visiting will likely hear many woodpeckers, including Hairy, Red-Headed, and Pileated Woodpeckers. The lucky visitor might glimpse a fox slinking over a ridge or spot a clump of Hen of the Woods. And springtime guests will be able to admire many different types of spring ephemerals, such as Snow Trillium, Rue Anemone, and Spring Beauty.

In addition to the Acquisition's rich ecological features, these lands include many unique features that combine art, architecture, and the environment with a variety of natural, cultural, and historical resources.

The most notable of such resources are the four hand-built round barns. These structures, included in the donated portion of the transfer, were constructed by Dick Schwab (with help

from various apprentices over the years). Each were built using wood salvaged from storm-damaged trees on site.

The largest of the structures, a 100' diameter

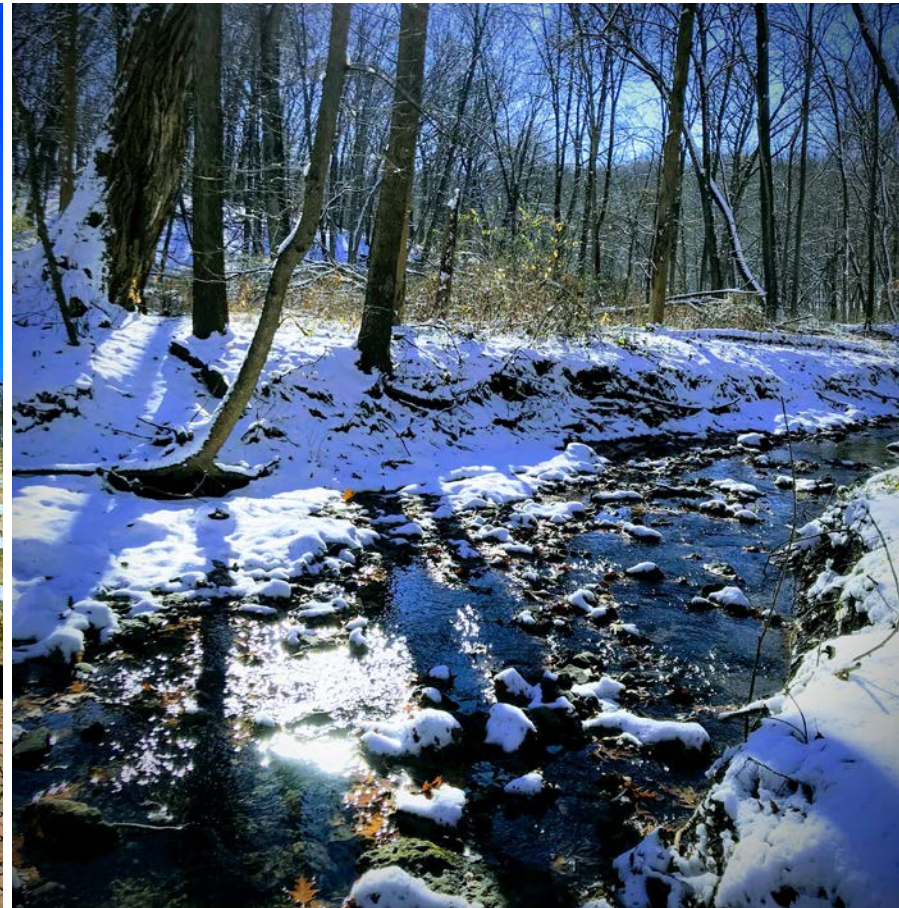
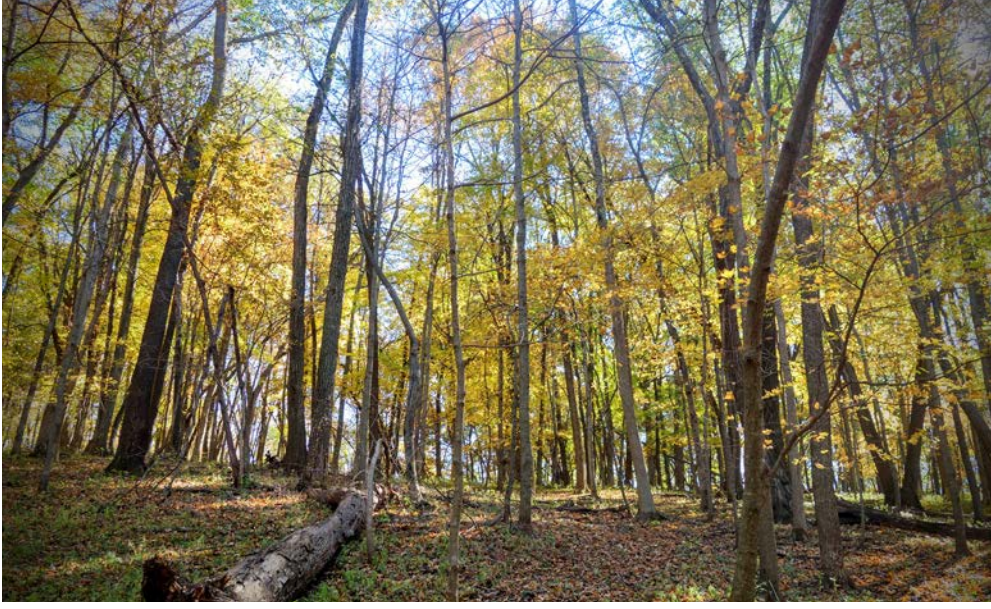
barn, opens to an amphitheater that overlooks another architectural gem built by Schwab: a large stone arch, one of the largest mortar-less arches in North America! This arch is free-standing and only pinned on the ground-connecting slabs. No details were spared, in fact, Schwab even included a labyrinth of brick built into the base of the arch. The labyrinth is modeled after the famous labyrinth in Chartres, France, constructed in the 13th century.

In coming years, additional features onsite may be accessible to the public, including a working sawmill, a restored 1925 caboose, a replica railroad handpump cart, a collection of antique tractors and cars, and a local food operation. All of us with JCC are excited by the endless educational and recreational opportunities that lie ahead!



Above: JCC is deeply grateful for the generosity of Dick Schwab and Katherine Burford, pictured here in the largest round barn. The transfer of their property to JCC includes the largest donation in JCC history!

Top: The largest structure on the property is the 100' diameter round barn, constructed in 2010. **Opposite page, clockwise from top left:** The open woodlands resemble the landscape as it was 200 years ago; The dominant tree species are oak and hickory. Old oaks, like those pictured, reach the canopy; a rocky creek runs through the property, allowing for stream discoveries by our youngest explorers; the hand-built arch is one of the largest mortar-less arches in North America. A labyrinth is located at the base of the arch and is modeled after a 13th century French labyrinth.



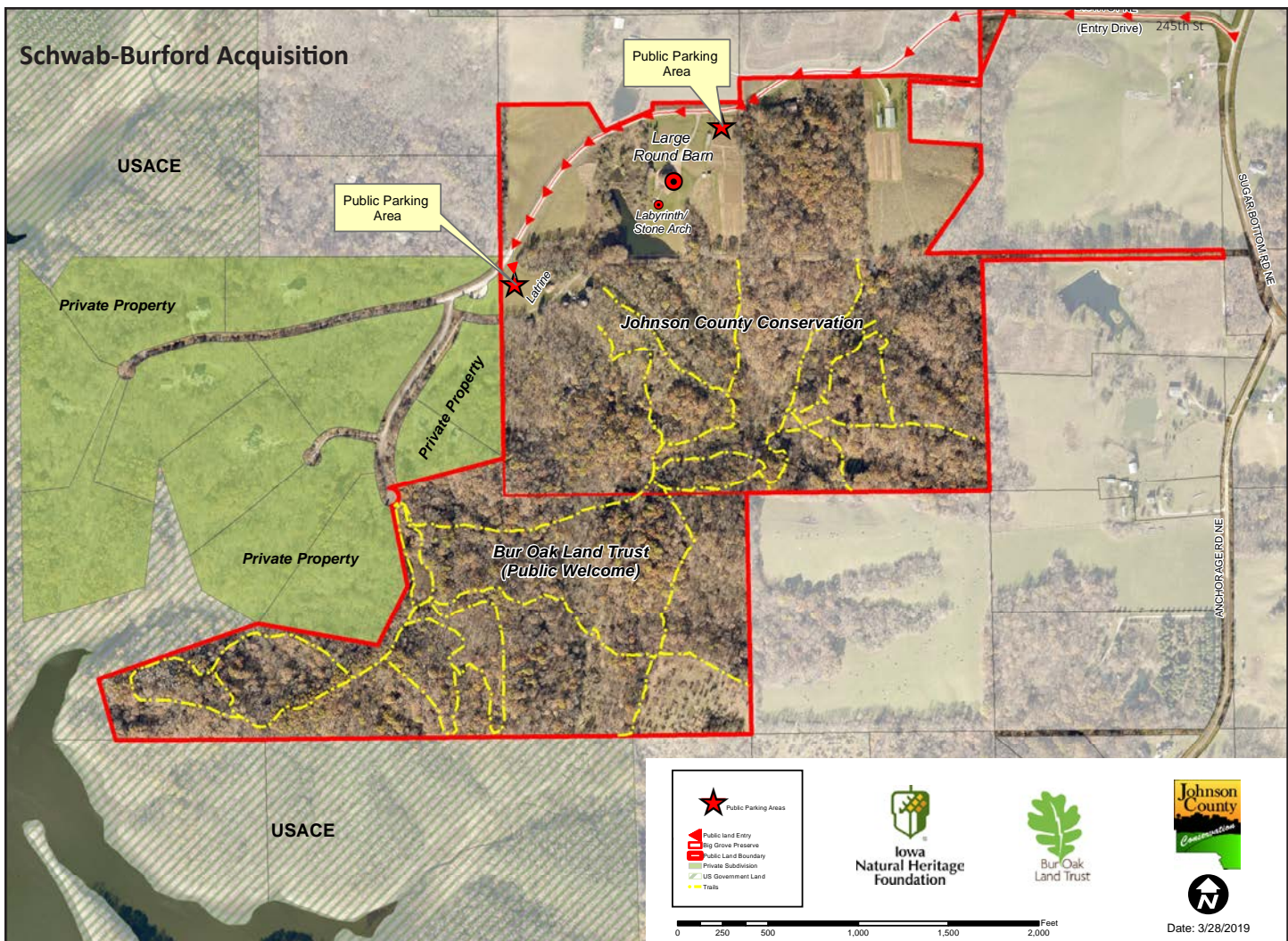
Continued on pg 6



Photo Credit: Angie Scharnhorst



Top Left and Right: Two features that may become available to the public in the future are an exquisitely restored caboose from 1925 and a wood shop. **Center:** The Acquisition features an area for local foods production. This feature will continue operating as it has in the past, preserving the “working landscape” aspects of the property. **Bottom left:** The round barns are filled with unique details, like this fireplace and chimney, built of limestone sourced from nearby quarries. **Bottom Right:** The woodland provides prime conditions for many edible mushrooms, like the morel pictured here.



Schwab-Burford Acquisition Visitors Guide:

Address: 4045 245th Street, Solon, IA 52333

Where to Park: There are two designated parking areas. One is located along the driveway to the Celebration Barn, near the local foods production area. The other is along the west boundary near the three additional round barns.

Restrooms: The only modern restroom facilities are located inside the large round barn. If the barn is not reserved for an event and is unlocked, visitors may use these restroom facilities. In all other cases, visitors must use the portable toilet located at the west parking area.

Reservations: To inquire about reserving the round barns for events, call 319-645-2315. To inquire about school fieldtrips onsite, call 319-645-1011.

Park Rules:

- This area is "carry in--carry out" referring to trash.
- Keep all pets on leash, and clean up after them.
- Park only in designated parking areas.
- Speed limit is 25 mph on entry road.
- Area opens 1/2 hour before sunrise and closes at 10:30 p.m.
- Please do not enter the greenhouses or local foods production area.
- Respect private property and do not venture onto adjacent private lands.
- The following are prohibited: climbing on stone arch, swimming in ponds, hunting/trapping, camping.

Acquisition Timeline:

April 2018:

Dick Schwab and Katherine Burford complete legal arrangements to sell/donate property to JCC. The Iowa Natural Heritage Foundation (INHF) temporarily holds land in trust.

July 2018:

JCC begins management of 96 of the 132 total acres of the property through a lease agreement with INHF. Public use opens.

December 2018:

JCC officially acquires the initial 96 acres, plus 3 additional acres from INHF.

Early 2020:

The remaining 33 acres of the property will be officially acquired by JCC from INHF.

Watching for Monarchs

Frances Owen- Naturalist

A lot of people talk about monarch butterflies during their fall migration down to the Transvolcanic Mountains of Central Mexico. It is this incredible journey that captivates so many citizens and scientists. During the past two decades, the eastern monarch butterfly population (those that are east of the Rocky Mountains) has declined by more than eighty percent due in large part to habitat loss. Milkweed, the only food source for their caterpillars, is far less abundant today than in the past, as are the flowering plants they use for nectar. Despite all of this, this past winter saw the highest numbers of monarchs overwintering in Mexico than any other winter in the past decade. Monarchs wintering in Mexico covered just over six hectares of forest, marking a 144% increase in numbers from the previous winter population, which covered only 2.48 hectares.

While it is heartening to see such high numbers of monarchs, their population can vary dramatically from year to year. Due to observable



population decline over the past twenty years, monarch butterflies are currently a candidate for listing under the Endangered Species Act. In response to this, last year a new plan, called the Mid-America Monarch Conservation Strategy, was established to help coordinate efforts between federal and local agencies, as well as private organizations and individuals. The heart of this plan is to establish more milkweed and nectar-rich plants in natural areas but also in agricultural lands, urban areas, and rights of way. Other important aspects of the Mid-America Monarch Conservation Strategy include education, outreach, and research, and this is where you can help!

You can get involved with monarch conservation by volunteering with Johnson County Conservation as we join the Integrated Monarch Monitoring Program (IMMP). IMMP is a volunteer citizen science program that provides information on habitat, eggs, larva, and adult monarch surveys, as well as tracking fun things like parasitism and monarch survival by raising larva in captivity. This is a national program, with volunteers all over the United States. We need dedicated volunteers to make this program successful and would love for you to become involved in this research with us! Contact Frances Owen at fowen@co.johnson.ia.us or call 319-645-1011 to learn more. Let's work together to ensure monarch butterflies continue to make their amazing journey.

Top: Monarchs flying at the Cerro Pelon Monarch Butterfly Sanctuary in February 2019. Photo credit: Mary Bulger, Naturalist from Iowa County Conservation. **Left:** The branches of an Oyamel Fir tree are heavy with thousands of monarch butterflies at the Cerro Pelon Monarch Butterfly Sanctuary in Central Mexico in February 2019. Photo Credit: Mary Bulger.

Volunteers Needed to Plant Kent Park Lake!

Pop-Up Volunteer Events in July

About the Project: As the restoration of Kent Park Lake is drawing towards its close, Johnson County Conservation (JCC) is gearing up for one of the final steps: filling the shoreline and reefs with native aquatic plants. Over 15,000 plants will need to go in the ground, a huge feat, and one that requires a lot of volunteers to get it done!

Who: JCC is especially seeking volunteers with gardening experience or an interest in botany/conservation. Some of the plants require gentle handling and planting, and because of this, our main focus is volunteers high school through adult. Volunteers should be comfortable walking over uneven terrain along the lake shore and able to handle the physical exertion required.

Timing: The conditions need to be just right

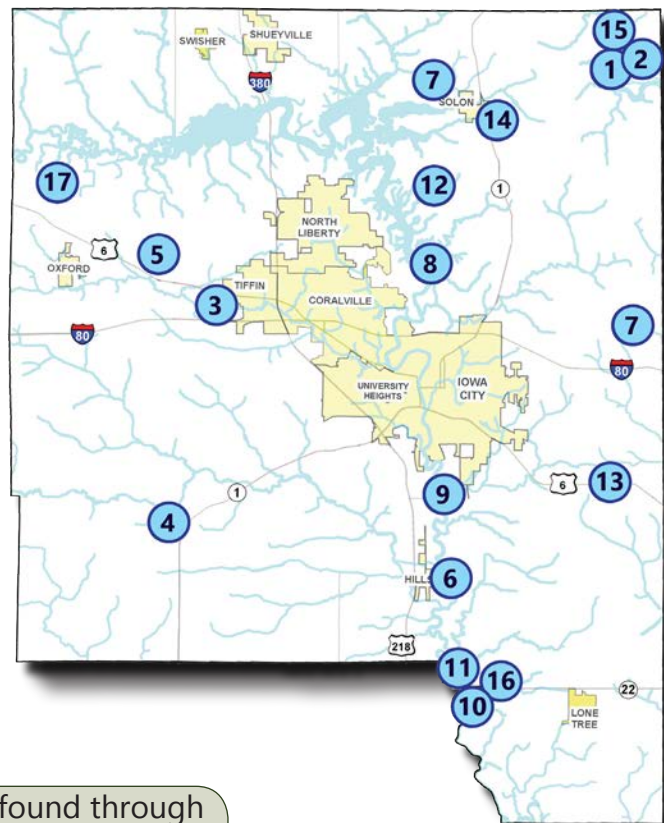
for planting. JCC will not set concrete dates for planting events but will instead have as many pop-up volunteer events as are needed to complete the project. These are estimated to take place within one week around mid-July.

To Sign Up:

- Email Conservation Program Manager Brad Freidhof at bfreidhof@co.johnson.ia.us.
- Email subject line: Lake Planting Volunteer_(full name)
- Include phone number in email for mass text notifications of pop-up events.
- If able to attend pop-up events, meet at the Kent Park Lake Boat Ramp at arranged time. Wear clothing and footwear that can get muddy. Bring water, snacks, sunscreen, and, if possible, a gardening spade.

JCCB Public Use Areas

1. Cedar River Crossing	514 acres
2. Ciha Fen	81 acres
3. Clear Creek Area & Trail	87 acres, 1.3 miles
4. Frytown Conservation Area	94 acres
5. F.W. Kent Park	1,052 acres
6. Hills Access	40 acres
7. Hoover Trail	6 miles
8. Iowa River Trail	3.5 miles
9. Iowa River Water Trail	22 miles
10. River Junction Access	12 acres
11. Pechman Creek Delta	380 acres
12. Schwab-Burford Property	132 acres
13. Scott Church Park	5 acres
14. Solon Prairie	3 acres
15. Sutliff Bridge & Access	1/2 acre
16. Walker Park	3 acres
17. Williams Prairie Preserve	21 acres



More information about JCC public use areas can be found through our website: www.johnson-county.com/conservation

Summer Program Calendar

May	Time	Event	Location
Saturday, 25th	9:00 a.m.	Spring Bird Banding	CEC
Friday, 31st	6:30 a.m.	Early Birds: Coffee and Donuts	CEC
June	Time	Event	Location
Saturday, 8th	10:00 a.m.	Great Iowa River Race	Sturgis Ferry Park, Iowa City
Saturday, 8th	1:00 p.m.	Raptor Meet & Greet	CEC
Monday, 10th	2:00 p.m.	Paddle in the Park	Kent Park Lake, Boat Ramp
Friday, 14th	8:30 p.m.	Firefly Night Hike	CEC
Sunday, 16th	1:00 p.m.	Kayak Class	Terry Trueblood, Boat Ramp
Monday, 17th	2:00 p.m.	Paddle in the Park	Pechman Creek Delta
Tuesday, 18th	5:30 p.m.	JCC Board Meeting	Conservation Admin.
Wednesday, 19th	8:00 a.m.	Kent Park Bird Walk	CEC
Wednesday, 19th	10:00 a.m.	Nature Buds: Art in Nature	CEC
Thursday, 20th	10:00 a.m.	Ciha Fen Berry Picking Hike	Ciha Fen Preserve
Thursday, 20th	6:30 p.m.	Froggin' Fun	CEC
Friday, 21st	10:00 a.m.	Orienteering	Youth Group Camp
Saturday, 22nd	1:00 p.m.	Raptor Meet & Greet	CEC
Monday, 24th	2:00 p.m.	Paddle in the Park	Kent Park Lake, Boat Ramp
Saturday, 29th	9:00 a.m.	Old and New: The Prairies of Kent Park	CEC
July	Time	Event	Location
Wednesday, 3rd	8:00 a.m.	Kent Park Bird Walk	CEC
Monday, 8th	2:00 p.m.	Paddle in the Park	Pechman Creek Delta
Wednesday, 10th	6:00 p.m.	Seedballs for RAGBRAI	CEC
Saturday, 13th	1:00 p.m.	Raptor Meet & Greet	CEC
Tuesday, 16th	5:30 p.m.	JCC Board Meeting	Conservation Admin.
Wednesday, 17th	8:00 a.m.	Kent Park Bird Walk	CEC
Wednesday, 17th	10:00 a.m.	Nature Buds: Prairie Plant Pieces	CEC
Monday, 22nd	2:00 p.m.	Paddle in the Park	Kent Park Lake, Boat Ramp
Friday, 26th	8:30 p.m.	Moth Night	CEC
Saturday, 27th	1:00 p.m.	Raptor Meet & Greet	CEC
Sunday, 28th	1:00 p.m.	Canoe Class	Terry Trueblood, Boat Ramp
Monday, 29th	2:00 p.m.	Paddle in the Park	Pechman Creek Delta
August	Time	Event	Location
Thursday, 1st	6:30 p.m.	Woodworking for Wildlife: Bat Houses	CEC
Sunday, 4th	1:00 p.m.	Fishing Class	Terry Trueblood, Boat Ramp

August	Time	Event	Location
Monday, 5th	10:00 a.m.	Paddle in the Park	Iowa River: Sturgis to Hills
Tuesday, 6th	6:30 p.m.	Ecoprinting	CEC
Wednesday, 7th	8:00 a.m.	Kent Park Bird Walk	CEC
Wednesday, 7th	6:30 p.m.	Introduction to Prescribed Fire	CEC
Monday, 12th	10:00 a.m.	Paddle in the Park	Cedar River: Palisades to Sutliff
Friday, 16th	10:00 a.m.	Hike It Baby	Clear Creek Trail
Sunday, 18th	1:00 p.m.	Say YES to Foraging in Summer	CEC
Monday, 19th	2:00 p.m.	Paddle in the Park	Kent Park Lake, Boat Ramp
Tuesday, 20th	5:30 p.m.	JCC Board Meeting	Conservation Admin.
Wednesday, 21st	8:00 a.m.	Kent Park Bird Walk	CEC
Wednesday, 21st	10:00 a.m.	Nature Buds: Monarch Butterflies	CEC
September	Time	Event	Location
Saturday, 14th	7:30 a.m.	Iowa River Clean-Up	Sturgis Ferry Park, Iowa City
Sunday, 15th	1:00 p.m.	Monarch Tagging	CEC



In the fall of 2018, Johnson County Conservation purchased ten kayaks to use for public programming, and the naturalists are excited to get them out on the water as much as they can! To help with that, JCC has started the Paddle in the Park series. Each month, a naturalist will lead paddling programs on different water bodies throughout the county. Most weeks, paddlers will explore either the newly restored Kent Park Lake or the backwater slough at Pechman Creek Delta. Both areas will provide unique experiences for the participants, whether paddling a seldom-paddled area like the slough, or checking out the different aspects of the lake restoration.

This series is designed to help the public explore new natural areas, but also to further the conversation on water quality. During each paddle, time will be set aside for citizen

science. Paddlers will help the naturalist gather water quality data and sample for aquatic macroinvertebrates (insects and other small creatures that tell us a lot about the health of the water body). Thus, paddlers are helping to gather a snapshot of the health of each aquatic system, data that will ideally be built on year after year.

To register: Email inaturalist1@co.johnson.ia.us or call 319-645-1011 to register. Participants are required to be at least 10 years old unless stated otherwise. Spaces are limited to the available JCC kayaks, but the Iowa River paddle will allow additional paddlers. More details about location, time paddling, etc., will be shared upon registration. Each event is dependent on safe weather conditions and water levels, and the program may be canceled or moved to a new location if needed.

Program Guide

Visit the Conservation Education Center!

Visitors of all ages are invited to stop in the CEC, explore the display room, and say hi to the education animals! Make sure to stop in the Bird Blind on the east end of the CEC parking lot too.

Hours: Saturdays and Sundays from 12:00-4:00 p.m.
May 25 - September 1

Special Programs:

Raptor Meet & Greet: On the 2nd and 4th Saturdays in June and July, join the folks from Raptology and meet a real live bird of prey! Stop in at the Education Center any time between 1:00 and 2:00 p.m. to get up close and personal with some of Iowa's native raptors. No registration necessary.

Kent Park Bird Walks: On the 1st and 3rd Wednesdays of the month, join the Iowa City Bird Club for a leisurely bird walk. Participants should meet at 8:00 a.m. at the CEC in Kent Park. for a 1.5 hour walk.

May

Spring Bird Banding

Saturday, May 25, 9:00 a.m.-Noon
Conservation Education Center, F.W. Kent Park

Join federally-certified bird banders for an opportunity to learn about and see songbirds up close! This free program will demonstrate the safe practices of banding through observation of banding equipment, operations, and viewing banded birds. Participants can come and go as schedules allow, and no registration is necessary. For more information, call 319-645-1011.

Early Birds: Coffee and Donuts

Friday, May 31, 6:30-9:00 a.m.
Conservation Education Center, F.W. Kent Park

Birds are often most active sunrise to mid-morning, and this time of year many different species are arriving or passing through Iowa. Come out early and join us for coffee and donuts as we observe some early bird activity. Participants can come and go as their schedules allow. No registration is necessary. For more information, please call 319-645-1011.

June

Great Iowa River Race

Saturday, June 8, 10:00 a.m.
Sturgis Ferry Park, Iowa City

The race is open to both recreational and competitive paddlers and includes canoes, kayaks, and paddleboards. The course covers 9.25 miles of the Iowa River, starting at Sturgis Ferry Park and ending at Hills Campground. The entry fee is \$30 per person and includes a t-shirt and lunch. There is no day-of registration, and all registration closes June 5th. Rentals are available for \$10 while they last. To learn more and to register, visit: <https://paddleguru.com/races/GreatIowaRiverRace2019>.

Paddle in the Park

Monday, June 10, 2:00 p.m.
F.W. Kent Park Lake

Paddle the newly restored Kent Park Lake! Spend a portion of the paddle gathering water quality data. For more details on the Paddle in the Park series, age requirements, and registration, see page 11.

Firefly Night Hike

Friday, June 14, 8:30-10:00 p.m.
Conservation Education Center, F.W. Kent Park

This free family event will start with a chance for families to explore on their own to catch and observe fireflies (tools provided). The program will finish with an optional mile-long night hike through the forest. Registration required; to register, email kmorrow@co.johnson.ia.us.

Kayak Class

Sunday, June 16, 1:00-4:00 p.m.
Terry Trueblood Park Lodge, Iowa City

Children age 10-13 years old can come learn how to kayak at Terry Trueblood Recreation Area! Kids will be taught the basics of kayaking before heading out onto the water. This class is being offered in partnership with the City of Iowa City Parks and Recreation department. To register visit: https://apm.activecommunities.com/iowacityrecreation/Activity_Search/kayaking/11463

Paddle in the Park

Monday, June 17, 2:00 p.m.
Pechman Creek Delta (5875 Sand Rd SE, Lone Tree, IA)

Explore the backwater slough at Pechman Creek Delta; look for signs of beaver and mussels and spend a portion of the paddle gathering water quality data. See page 11 for more details.

Nature Buds: Art in Nature

Wednesday, June 19, 10:00 a.m.
Conservation Education Center, F.W. Kent Park

Nature Buds is a monthly program for children 3 to 5 years of age. This series encourages adult/child interaction through indoor stations and outdoor activities; one adult to every two children is required. Email fowen@co.johnson.ia.us to register.

Ciha Fen Berry Picking Hike

Thursday, June 20, 10:00 a.m.-Noon
Ciha Fen Preserve (5656 145th St NE, Lisbon, IA)

Explore this quiet JCC property with a short hike around the trail-less prairie-savanna. We'll also spend time picking raspberries from the thick patches, helping expose little ones to where food comes from. The site is primitive, with no restroom facilities or shelters. Registration required; to register, email fowen@co.johnson.ia.us.

Froggin' Fun

Thursday, June 20, 6:30-8:00 p.m.
Conservation Education Center, F.W. Kent Park

Spend an evening catching and learning about frogs and toads! After a short indoor presentation, we'll head out to catch frogs, tadpoles, and other aquatic critters. Tools will be provided. Participants should be prepared to get wet/muddy. Registration is required; to register, email kmorrow@co.johnson.ia.us.

Orienteering

Friday, June 21, 10:00 a.m.-12:30 p.m.
Youth Group Campground, F.W. Kent Park

Want to lose yourself in nature, but not get lost? Join us for an intro to orienteering. This program is designed especially for kids ages 9-12, but bring the whole family! The program will introduce compass usage, map reading and other land navigation skills. Those up for a challenge can try an orienteering course. Meet at the Youth Group Campground. To register, please email inaturalist1@co.johnson.ia.us.

Paddle in the Park

Monday, June 24, 2:00 p.m.
F.W. Kent Park Lake

Paddle the newly restored Kent Park Lake! Spend a portion of the paddle gathering water quality data. For more details on the Paddle in the Park series, age requirements, and registration, see page 11.

Old and New: The Prairies of Kent Park

Saturday, June 29, 9:00 a.m.-12:00 p.m.
Conservation Education Center, F.W. Kent Park

JCC, in partnership with the Friends of Johnson County Conservation and the Iowa Native Plant Society, is hosting an educational tour about the restored and relic prairies of Kent Park. Participants will tour via hayrack; spaces are limited, so register early for this free program by emailing bfreidhof@co.johnson.ia.us or calling 319-645-2315. The tour starts at 9:00 a.m., and a restoration-specific indoor presentation will cap the program.

July

Paddle in the Park

Monday, July 8, 2:00 p.m.
Pechman Creek Delta (5875 Sand Rd SE, Lone Tree, IA)

Explore the backwater slough at Pechman Creek Delta; look for signs of beaver and mussels and spend a portion of the paddle gathering water quality data. See page 11 for more details.

Milkweed Matters: Seedballs for RAGBRAI

Wednesday, July 10, 6:00 p.m.
Conservation Education Center, F.W. Kent Park

Get your hands dirty and help native pollinator habitat in Iowa by making seedballs! Seedballs made by you will be distributed by bicyclists on this year's RAGBRAI. This event is hosted in partnership with Milkweed Matters. All ages are encouraged to volunteer! Email inaturalist1@co.johnson.ia.us to register.

Nature Buds: Prairie Plant Pieces

Wednesday, July 17, 10:00 a.m.
Conservation Education Center, F.W. Kent Park

Email inaturalist1@co.johnson.ia.us to register. For more program details, see June's program.

Paddle in the Park

Monday, July 22, 2:00 p.m.
F.W. Kent Park Lake

Paddle the newly restored Kent Park Lake! Spend a portion of the paddle gathering water quality data. For more details on the Paddle in the Park series, age requirements, and registration, see page 9.

Moth Night

Friday, July 26, 8:30-10:00 p.m.
Conservation Education Center, F.W. Kent Park

Come learn about the beauty, life-cycles, and habitats of moths. "Moth-ers" of all ages are encouraged to help us document and celebrate the moths of Kent Park as part of National Moth Week. A short presentation about moths will take place at 8:30pm. Nothing will take place starting at 9:00pm and continuing until at least 10:00pm. This program is free, but registration is requested to ensure adequate supplies and staff. Please register by emailing fowen@co.johnson.ia.us.

Canoe Class

Sunday, July 28, 1:00-4:00 p.m.
Terry Trueblood Park Lodge, Iowa City

Children age 10-13 years old can come learn how to canoe at Terry Trueblood Recreation Area! Participants will be taught the basics of canoeing before heading out onto the water! This class is being offered in partnership with the City of Iowa City Parks and Recreation department. Register for this class on their website at: https://apm.activecommunities.com/iowacityrecreation/Activity_Search/canoeing/11462

Paddle in the Park

Monday, July 29, 2:00 p.m.
Pechman Creek Delta (5875 Sand Rd SE, Lone Tree, IA)

Explore the backwater slough at Pechman Creek Delta; look for signs of beaver and mussels and spend a portion of the paddle gathering water quality data. See page 11 for more details.

August

Woodworking for Wildlife: Build a Bat House

Thursday, August 1, 6:30 p.m.
Conservation Education Center, F.W. Kent Park

Come learn about and get involved in bat conservation! Participants will learn a bit about Iowa bats and construct a single chamber bat house for their own house or property. There is a \$10 fee for materials for

this program. Registration required; to register, call 319-645-1011 or email inaturalist1@co.johnson.ia.us.

Fishing Class

Sunday, August 4, 1:00-4:00 p.m.
Terry Trueblood Park Lodge, Iowa City

Children age 10-13 years old can come learn how to fish at Terry Trueblood Recreation Area! Participants will be taught the basics of fishing. This class is being offered in partnership with the City of Iowa City Parks and Recreation department. Register for this class on their website at: https://apm.activecommunities.com/iowacityrecreation/Activity_Search/fishing/11464

Paddle in the Park

Monday, August 5, 10:00 a.m.
Iowa River: Sturgis Ferry Access to Hills Access

This week's paddle is open to adults only. We'll explore this 9-mile section of river and discuss issues of erosion and management along the way. This section will take two to three hours to paddle. Participants should pack a lunch for a sandbar picnic. An additional ten kayakers with personal watercraft are welcome to register this week. See page 11 for more details.

Ecoprinting

Wednesday, August 6, 6:30-8:30 p.m.
Conservation Education Center, F.W. Kent Park

Learn how to make eco-friendly prints on fabric by using the natural materials around us! Each participant will transform a plain scarf into a beautifully printed, one-of-a-kind piece. Scarves will be finished by the instructor and can be picked up at the CEC at a later date, or mailed to participants for an extra fee. The cost of this program is \$20 payable at the time of the program. Pre-registration is required and space is limited; email fowen@co.johnson.ia.us or call 319-645-1011 to reserve your scarf today!

Introduction to Prescribed Fire

Wednesday, August 7, 6:30 p.m.
Conservation Education Center, F.W. Kent Park

A large smoke plume, burnt trees, blackened grassland: all evidence of fire and its pivotal influence on Iowa's landscape. Prairie enthusiasts and those interested in land restoration will enjoy this presentation on the natural history of fire in Iowa and how a safe and successful prescribed burn is planned and conducted. To register, please email inaturalist1@co.johnson.ia.us.

Paddle in the Park

Monday, August 12, 10:00 a.m.
Cedar River: Palisades State Park to Sutliff, IA

This week's paddle is open to adults only. We'll explore this 9-mile section of river and discuss issues of erosion and management along the way. This section will take two to four hours to paddle. Participants should pack a lunch for a sandbar picnic. See page 11 for more details.

Hike It Baby

Friday, August 16, 10:00 a.m.
Clear Creek Trail (3196 Half Moon Ave NW, Tiffin, IA)

Hike It Baby is a national group with the goal of raising a generation to love the outdoors. Join in by bringing your little-one (all ages invited, not just babies!) on this casual, naturalist-led hike. Please arrive 15 minutes early. Contact 319-645-1011 for updates or questions.

Say YES to Foraging in Summer

Sunday, August 18, 1:00-3:30 p.m.
Conservation Education Center, F.W. Kent Park

Take a walk with a JCC naturalist and learn about some of the foods and medicines that can be foraged, in summer! This program is outside and features a walk over uneven terrain. Registration is required; email fowen@co.johnson.ia.us to register.

Paddle in the Park

Monday, August 19, 2:00 p.m.
F.W. Kent Park Lake

We'll finish where we started by exploring the newly restored Kent Park Lake! For more details on the Paddle in the Park series, age requirements, and registration, see page 11.

Nature Buds: Monarch Butterflies

Wednesday, August 21, 10:00 a.m.
Conservation Education Center, F.W. Kent Park

Email fowen@co.johnson.ia.us to register. For more program details, see June's program on page 13.

September

Iowa River Clean-Up

Saturday, September 14, 7:30 a.m.-3:30 p.m.
Sturgis Ferry Park, Iowa City to Hills Access

Volunteers of all ages are needed in canoes, kayaks, and

on land to help pull tires, trash, and recyclables from this nine-mile stretch of river. A limited number of canoes, paddles, and life jackets are available free of charge. Registration is required by September 8th. To register, visit www.iarvcp.org. For paddling questions, contact Dan Ceynar at 319-321-1755 or ryangracel@gmail.com. For event/registration questions, contact Carol Sweeting at 319-541-2385 or carol-sweeting@iowa-city.org.



Monarch Tagging

Sunday, September 15, 1:00 p.m.
Conservation Education Center, F.W. Kent Park

Join JCC to learn about Monarch Butterflies and take part in citizen science! An indoor presentation about monarchs will be followed by outdoor exploration to catch, tag, and release the butterflies as they pass through Kent Park. This is a free event. Pre-registration is requested; to register, email fowen@co.johnson.ia.us.

Volunteer Preview

Save the dates for fall volunteer seed harvest events! Volunteer Lois Albrecht will lead Thursday morning seed harvest programs on Sept. 26th, Oct. 3rd, 10th & 17th. All collected seeds will be used for JCC's future prairie restoration projects. Harvest events run from 10:30 a.m. to 12:30 p.m. and take place in Kent Park (exact meeting spots TBD). To sign up, call 319-645-1011 or email kmorrow@co.johnson.ia.us.



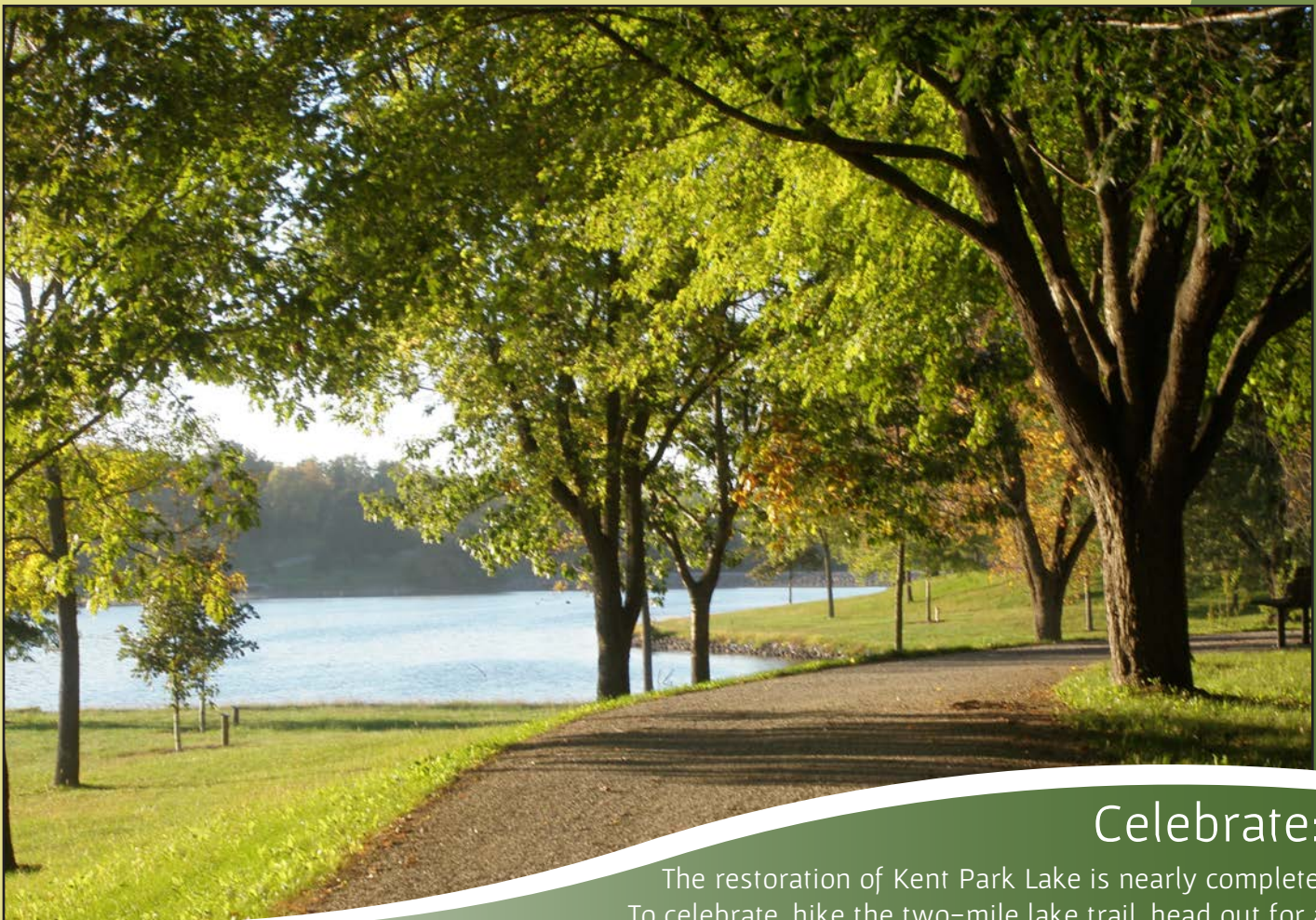


Johnson County Conservation
2048 HWY 6 NW
Oxford, IA 52332

Sign up to receive our newsletter through email
by visiting: <http://bit.ly/JCCNewsletter>



PRINTED ON
RECYCLED PAPER



Celebrate:

The restoration of Kent Park Lake is nearly complete!
To celebrate, hike the two-mile lake trail, head out for a
paddle, or spend the day at the beach!